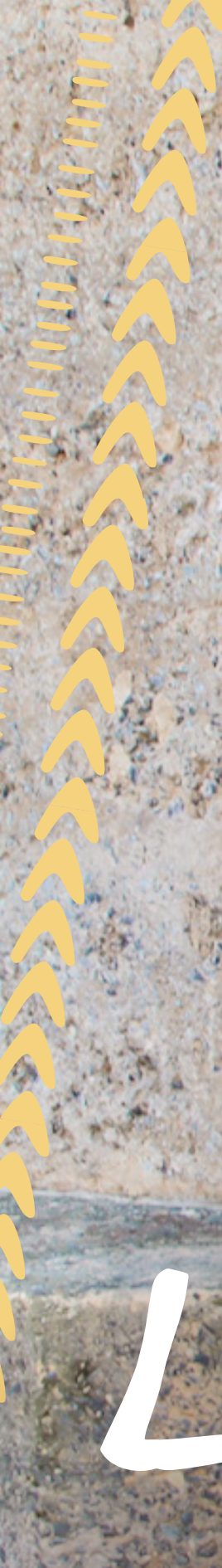


2021/2022

ANNUAL REPORT



LALELA
LIFE-CHANGING ART





Contents

This report is interactive! Use Adobe's Acrobat Reader for the best experience.



Download a free version of Adobe Acrobat Reader DC.
adobe.com/africa/acrobat/pdf-reader.html



Introduction _____ 04

About us _____ 08

Impact _____ 20

Highlights _____ 24

Sustainability _____ 25

Financials _____ 28

Partners _____ 29

Our People _____ 31



Our Mission

Lalela provides educational arts for youth from under-resourced communities to spark **creative thinking** and awaken the **entrepreneurial spirit**.

Dear Lalela friends,

“The Art of Regeneration” was the apt theme chosen for Lalela’s educational arts curriculum for 2021, signifying what was hoped to be a year of steady recovery for our operations and programs, and a period focusing on healing, restoration and reconnection.

As the unsettling effects of the Covid-19 pandemic continued to ripple across the globe, rioting in South Africa in July compounded an already entrenched sense of despair as further lockdowns were implemented. In schools, class sizes were greatly reduced and learners’ attendance rotated in an effort to prevent the spread of the virus. Like all after-school programs, Lalela workshops were required to comply with these regulations. While the adverse effects of this were unavoidable, we can also report with much gratitude that our work, through Lalela programmes, curricula and outreach, had a positive impact that was felt well beyond our own communities.

In 2021 we began the rollout of Lalela’s South African Council for Educators (SACE) accredited Trauma Curriculum training, equipping teachers with the resources to identify and help children affected by trauma. Months of uncertainty, anxiety and loss, added to already challenging circumstances, had resulted in marked behavioral changes in learners. Feedback received from

educators following the training noted a significant improvement in participation by especially vulnerable children in their classrooms. Another way that Lalela was able to provide meaningful, tangible support was through the provision of food aid throughout the year, thanks to invaluable grant support.

Excitingly, this was the year that Lalela’s first intake of learners in Hout Bay (in 2011) graduated from school and our program, each one testimony to the strength of our Theory of Change. Those grade two children have become young adults with promising futures – they are true “trailblazers of change”. On the pages that follow, we’re honored to share some of the personal stories of past as well as current students about their journeys with Lalela and the powerful role of the creative arts in helping to manifest their dreams and goals.

“When you truly listen to our learners, you hear the voice of the future. A voice that is filled with a vision far beyond our dreams. Our learners’ minds are

brimming with ideas and possibilities, and if you listen closely you can hear the courage they have to push through the challenges of their social circumstances to create a positive life for themselves.”

These are the words of Lalela’s long-serving Senior Program Manager, Firdous Hendricks. At the time of writing this foreword to our 2021 Annual Report, Lalela’s leadership is undergoing its own evolution, and we are delighted that Firdous is stepping into the role of Executive Director. Having been instrumental in developing our curricula, and seeing its impact on the youths in our programs from inception, she is uniquely equipped to take the organisation through our next phase, which is anticipated as being one of growth.

It is in no small part due to our committed, adaptable and resourceful team, and to the tremendous loyalty and support of our donors and partners, that we were enabled to be of service over this period, and we look forward to continuing this impactful journey with you.

In gratitude,

Andrea Kerzner,
Founder & CEO

Leigh Robertson,
Executive Director (Outgoing)



Andrea Kerzner



Leigh Robertson



Firdous Hendricks

Our Story

Lalela's educational arts program has touched the lives of thousands of youths since 2010, where our story begins. From a gathering of 20 students during the Soccer World Cup in the South African township of Imizamo Yethu, Western Cape, our program has expanded its reach to a multitude of under-resourced communities in Cape Town, Johannesburg, and beyond South African borders.

In partnership with low-fee or no-fee schools and other youth-development organizations, we host workshops every day after school – in the hours when children are most vulnerable to abuse of every kind. We start from as early as age six in developing the art of imagination, and continue through to grade 12.

Lalela's curricula are built at the intersection of arts education, academic achievement and critical life skills, with the aim of activating whole-brain thinking and developing the creative potential of the youths in our program. In so doing, they are encouraged to complete, if not excel at, their academic studies, find purposeful life goals, go on to pursue meaningful careers, and become role models in their own right.



LALELA (la-le-la)

Lalela is an isiZulu word that means **“to listen,”** and it is at the heart of what we do. By listening to children's stories and each community's needs, we are able to understand their challenges and, in turn, provide creative solutions and a way forward.

What does 'listening' mean?

“Lalela provides safe, fun and creative spaces where children feel seen and heard. When a child feels seen and heard, they feel valued. When a child feels valued, it builds their self-esteem. When a child believes in themselves and their abilities, it helps them have a positive outlook on life. This increases their well-being and helps them achieve their goals, which also has a beneficial impact on their friends, family and greater community.”

Amy Cornfield, Lalela Facilitator, Zeitz MOCAA

“We listen with our hearts and our minds. I hear their life stories, daily experiences, and community challenges, and together we are able to come up with creative solutions or a way forward when needed, even as basic as words of encouragement. No learner leaves the classroom without being heard.”

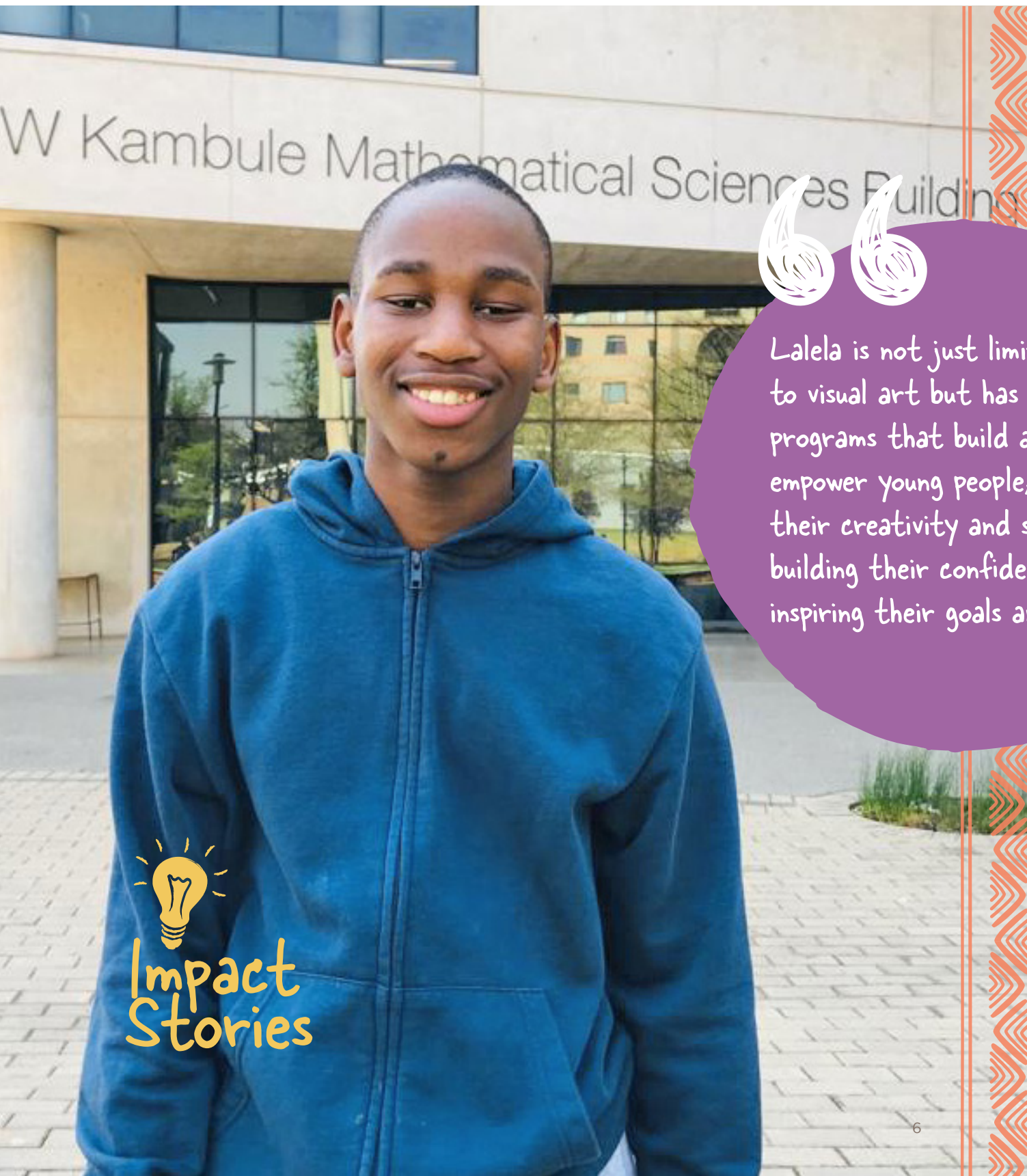
Nwabisa Ndongeni, Lalela Facilitator, Masiphumelele

“Initially most of our learners will communicate fear and obstructed views of themselves, but I also hear an insatiable hope for more in their lives and they may not always know what that is. Lalela responds with the core of our methodology, the intrinsic micro-messaging that plants seeds of self-belief and creativity which gives each child potential to develop that seed to whatever they may choose as they mature.”

Vika Mjoka, Maboneng, Program Manager, Lalela Center for Arts and Innovation

“We stand for listening deeply to young people, listening with our heart, eyes and ears to show our learners that we hear them, feel them, we understand and we care. Every day I listen to my learners, all I hear is, 'I am who I am, I matter, I have a voice. I can do all that I can and I can be whoever I want to be.' Our learners show a lot of potential and they are amazing kids who need to be heard and given guidance.”

Tandi Makhabeni, Lalela Facilitator, Hout Bay



Lalela is not just limited to visual art but has other programs that build and empower young people, extending their creativity and social skills, building their confidence, and inspiring their goals and visions.

NKULULO (18) is a Lalela alum who is currently studying towards a degree in chemical engineering at Wits University in Johannesburg. He's come a long way, having joined Lalela's after-school program at Silikamva High in 2017. He excelled in his final exams, earning himself the Top Achiever Award as well as awards for Mathematics, Physics and isiXhosa. "As an aspiring engineer it is my dream to make my career a success and be able to meet and solve people's needs through my profession," he says.

"It's hard to make a living in Imizamo Yethu if you don't have vision as an individual. Teenagers are exposed to a lot of things that might cost them their dreams, including negative peer pressure, substance abuse and truancy, which are due to lack of development and economic income. There might be limited opportunities, but if people could change the way they look at themselves and their community, and use the opportunities that come their way, there could be changes in the way they do things and respond to the stereotype of growing up and living in the township.

"Initially I thought Lalela was all about visual arts but as I was growing up, I started to analyze the significance of the curriculum to me, my peers and my community. I learnt that it is a space of learning, creativity, imagination and mentorship. Lalela is not just limited to visual art but has other programs that build and empower young people, extending their creativity and social skills, building their confidence, and inspiring their goals and visions.

"I like how Lalela prepares young children; teaches and brings awareness to the different age groups about the things that are happening around the world, the continent, the country and in the communities. I was never good at visual art, but I continued with Lalela because it was not about how good you are at mixing colors but rather about passing information to the next party in a form of art."



Why the arts?

The arts are often the first subject to be removed from a school due to a lack of resources, yet the importance of creativity in a child's life is significant. **Research proves** that arts education enriches the lives of students, increasing their academic, social, mental and economic well-being over the long term.

Our Values

- A** Always inspire with creativity
- R** Reimagine challenge as opportunity
- T** Trust we can be Trailblazers of change

Outcomes

Lalela's arts education program contributes to six outcomes, which are key indicators of life and academic success.



Academic achievement

For at-risk students, arts education increases school attendance, motivation to learn and academic success across the curriculum, with art students outperforming their peers on standardized tests.



Grit & perseverance

Students in the arts receive ongoing, constructive feedback and come to understand that feedback is a tool for improvement. Artists constantly draft, practise or rehearse their work before its presentation. They develop the humility and grit to acknowledge criticism and adjust their art as needed.



Critical problem-solving

Students who study the arts re-evaluate their work as they go and develop advanced problem-solving skills, adapting their artwork to new perspectives and materials. As a result, art students are more likely to approach problems with patience and innovative thinking.



Creativity & innovation

The development of creativity and innovation is at the center of arts education. In the arts, students are not confined by one answer. Instead, they are continually asked to try new things and seek alternatives. This kind of creative thinking is a key first step towards innovation, which is essential in an increasingly competitive world.



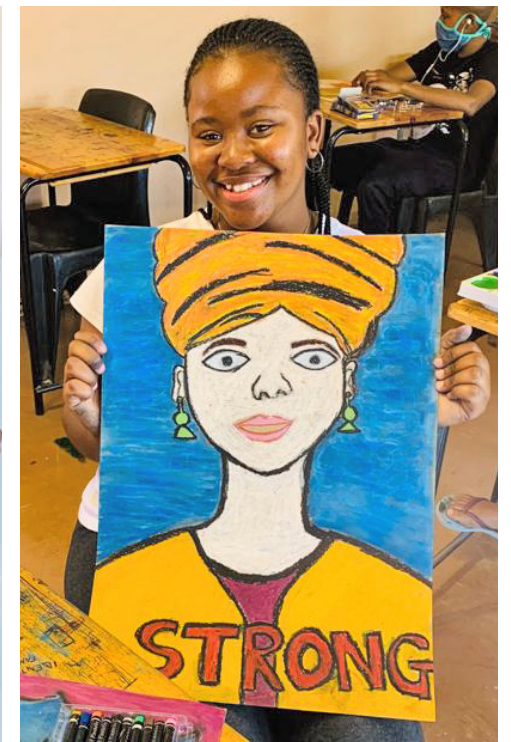
Communication & collaboration

Arts education provides students with a wide variety of collaborative projects, ranging from painting murals to participating in theatrical and musical performances. These projects teach students how to work in a team and how to navigate each other's strengths and weaknesses.



Confidence & leadership

The presentation of their work, through exhibit or performance, gives art students a sense of accomplishment. As a result, they develop a strong sense of identity and confidence in their ability to interpret concepts and express their opinions, driving their ability to perform as leaders in their communities.





YOLANDA (19) started with Lalela in 2015 as a Grade 6 learner at Moravian Primary in Imizamo Yethu, and later also joined our Female Empowerment and Leadership programs. She graduated from Silikamva High with flying colors, winning the Top Achiever award as well as certificates for Physics, Mathematics and History. Rather than go straight into tertiary studies, she took a gap year to gain work experience as a Lalela intern.

About this experience, she says, “I saw it as an opportunity to prepare for the big world out there, and a chance to help a child like me see that anyone can change and be confident.” Next she’ll be studying for a degree in chemical engineering at Gauteng City College.

“Lalela taught me to believe in myself, no matter what others think, and helped me to gain self-confidence. I learned that it’s okay to be different from other people. As a Zimbabwean, I liked that Lalela is non-discriminatory. When I joined, I couldn’t speak or understand

isiXhosa, which is what the teachers spoke in school. Our Lalela classes helped me to integrate because they were in English.

“Through Lalela I got to discover the artist in me, and that I have a talent for writing. The Female Empowerment program helped me develop the mindset that, as a woman, I shouldn’t be undermined or let others bring me down. As a Lalela Leader, I learned to stand up for those who couldn’t stand up for themselves. I can now stand up and voice my opinion or share it with others.

“My dream is to be successful in my life, but I want my success to be everyone’s success; I would really like to change my community in whichever way I can, that’s why I’m trying so hard to change my life. I believe that no matter your circumstances at home or in your community, there is always hope and that you should be the change you want to see. When you do, a lot can happen; you can change someone else’s life, too.”

“As a Zimbabwean, I liked that Lalela is non-discriminatory. When I joined, I couldn’t speak or understand isiXhosa, which is what the teachers spoke in school. Our Lalela classes helped me to integrate because they were in English.”

Our Methodology

Lalela's unique methodology is one of the key factors to our program's success.



Lalela's educational arts program is designed to create permanent, positive change in the lives of our learners, providing them with the mindset to design a more certain future for themselves.

Our methodology, in development since 2011, connects the arts to everything important in a child's life, from core academics to critical life skills. At its heart is our philosophy that we do not teach learners what to think; rather, we provide experiential learning that encourages them how to think.

Our curriculum and facilitation methods are supported by thorough needs assessments, rigorous training of facilitators and diligent implementation

as well as community-based strategic partnerships.

Ideas, Art and Music (I AM) form the signature components of every Lalela curriculum.

Every lesson has a consistent rhythm: first an icebreaker, then creative meditation and arts implementation, and finally, reflection. We place an emphasis on timeliness and respect for each other in a collaborative and safe setting.

We promote positive classroom behavior and attitudes by rewarding attendance, collaborative work, respect, courage and leadership.

Lalela has developed a unique, replicable model that can easily be implemented in other communities.

Each curriculum:

- 1 ... is **stand-alone with a step-by-step process** which allows any person with basic arts training to implement and adapt it in any community.
- 2 ... has a **primary and a secondary goal** to connect the curriculum to our Theory of Change (ToC) outcomes.
- 3 ... includes **baseline questions** asked at the beginning and the end of each session to measure its primary and secondary goals.

Lalela supports and is aligned with these Sustainable Development Goals:





Impact Stories

GRASHEM (17) is a learner at Silikamva High in Imizamo Yethu, where he attends Lalela's after-school program and works zealously on his own creative projects. He's a gifted poet and spoken word performer who dreams of making it in the music world and, more importantly, using his talent for good in his own community.

"If you believe in yourself, you can achieve anything. And a little love and sympathy can make a big difference in the world," he says.

"My community, Imizamo Yethu, is full of distractions. You can be easily tempted. What I like about it is that the neighbors are loving and care for one another. You can always count on them. The challenges are that you will not look the same in everyone's eyes. It's mostly loud and there are some fights here and there. And it's scary to

live with people who fight. It's hard to cope with the violence. If I could change anything it would be the way people handle conflict matters. I would change their mindsets and the way they view the world. Many people have already given up and accepted life the way it is.

"At Lalela I learned that if you want to make a change in the world, first you have to make changes within yourself and see the world from all different angles. And to always think creatively, always be positive. And reimagine challenges as opportunities. And always believe you can reach your goals, no matter what. Lalela gives hope and inspires people of all ages and offers support and opportunity for all art talents. They change lives and are always there to help in whatever way they can. I love the fact that they are driven and have the hunger to change people's lives for the better.

"After school I would like to get more into the art of writing. And go further making music, motivating people and helping in whatever way possible. My dream is to one day uplift a million souls with my talent, to give hope and teach people that love is greater than hate."



At Lalela I learned that if you want to make a change in the world, first you have to make changes within yourself and see the world from all different angles.



Our theory of change

Our Monitoring and Evaluation Learning (MEL) model has been developed to measure the impact of our program on a short- and long-term basis.

The Lalela MEL model has been developed in a participatory manner and is firmly based on actualities on the ground. The MEL model has been designed to be integrated into Lalela’s program processes and operations so that it is part of the workflow at all levels. Our innovative Theory of Change allows us to strengthen and refine the development of our arts education program and ensures that we remain focused on the objectives. Our Theory of Change is based on the understanding that innovative and creative young people will contribute to social and economic development.



Indicators

Lalela graduates are role models and innovators with meaningful careers.

SHORT-TERM

STO1: More positive towards self, others and future

- more respectful
- more confident
- more positive future goals

STO2: More creative

- more imagination
- better art skills
- more use of creativity to manage stress and emotion

MEDIUM-TERM

MTO1: Better interactions with others

- with other friends
- with school staff
- at home and in the community
- better communication skills
- better social & emotional intelligence

MTO2: More positive behavior: Healthier choices

- reduced substance abuse
- fewer teenage pregnancies
- more self respect
- less crime and aggression

MTO3: More positive behavior: Greater tenacity

- increased commitment, motivation and resilience
- improved leadership and responsibility
- improved grit, drive and resilience

MTO4: Better cognitive and school performance

- higher school pass rates
- higher school graduation rates
- fewer school drop-outs
- better school marks
- better cognitive functioning

LONG-TERM

LTO1: Active citizens

- more involved in the community
- more involved at school
- more involved at home

LTO2: Positive role models

- leadership positions at school and in the community

LTO3: Meaningful work/further education

- more innovative
- more graduates in meaningful employment
- more graduates in higher education



Impact Stories

LILLIAN (19) suffered from low self-esteem when she first joined Lalela's Maboneng program, but is now a confident dance student and junior coach with big plans for her future. Not having been satisfied with the results of her final school exams, she dedicated herself to rewriting them in order to qualify for university.

She plans to study towards a Bachelor of Applied Arts degree in audio-visual production, with the goal of becoming a powerful TV personality with her own production house. "Never give up on your dreams, and never be ashamed of your dreams," she says.

"When I was little, I used to think art was all about drawing and painting, but through Lalela I've learnt how to understand art in different ways and its importance. Moreover, I've learnt to love, care, share and be there for other people. I liked the fact that Lalela makes everyone feel welcome, loved and appreciated. It doesn't judge you or discriminate against you based on your culture, gender, race or disabilities.

"As a youth, I think it's important to have programs that raise awareness about taking care of our community. My community is diverse in that people have different cultures, religions and languages. Sometimes it's peaceful and safe, but other times it's ear-splitting and feels unsafe. There are a lot of things I don't like about it, like the high crime and unemployment rates, the low levels of education, pollution, and domestic violence.

"To other youths I say, 'There is always another way'. We have a lot of youngsters making mistakes and claiming that there was no other way, when they could've made a different decision."



When I was little, I used to think art was all about drawing and painting, but through Lalela I've learnt how to understand art in different ways and its importance.



Our communities and partnerships

Strategic partnerships with low-fee or no-fee schools and other organizations that champion youth development allow us to grow our program while putting Lalela at the forefront of educational arts in Southern Africa. These partnerships enhance our ability to advocate the critical contribution that the arts make to academic achievement, socio-economic change and innovation.



When a learner dares to defy the norms and make different, positive decisions for themselves, this has a ripple effect in their community. If we can provide the youth with a nurturing space to develop the skills and the audacity to make positive changes in their lives, it builds a different root system for the generations that will follow them.

MR. JULIUS, PRINCIPAL, HOUT BAY HIGH SCHOOL

Western Cape, South Africa

1 Hangberg

Hangberg in Hout Bay was once a flourishing fishing village, but due to the steady decline of its economic health, now suffers from extreme poverty and issues such as gangsterism and domestic violence. Its population is predominantly mixed-race English- and Afrikaans-speaking.

School Partners: Sentinel Primary School, Hout Bay Primary School and Hout Bay High School.

2 Imizamo Yethu

IY, as it's commonly known, is an informal or shack settlement set on a steep mountain slope in Hout Bay, with a population of approximately 40,000 mostly isiXhosa-speaking residents. It is beset by issues such as overcrowding, unemployment and substance abuse.

School Partners: Oranjekloof Moravian Primary School and Silikamva High School.

3 Masiphumelele

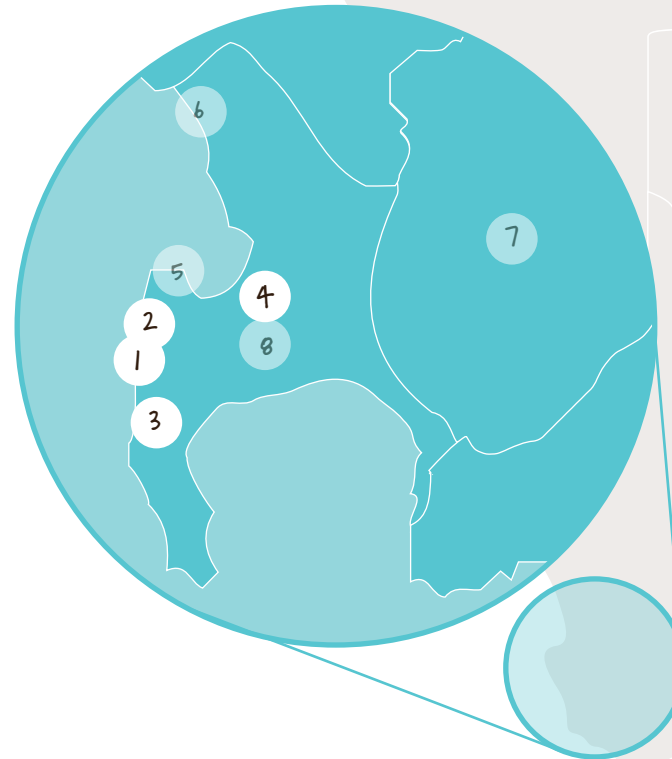
Masiphumelele, or Masi, is a township near Fish Hoek with a mostly isiXhosa-speaking population. Basic amenities are scarce in the community, which, in addition to suffering the effects of extreme poverty, has a high prevalence of HIV and tuberculosis.

School Partners: Ukhanyo Primary School and Masiphumelele High School.

4 Bonteheuwel

Bonteheuwel is a Cape Flats community ravaged by violence and gangsterism. Marked by abject poverty, poor infrastructure and overcrowding, a lack of opportunities for youth further drives the allure of drug use and criminal activity.

School Partner: Disa Primary School.



“What I’ve noticed is that learners feel more free to be themselves in the Lalela classroom. It’s a space where they feel wanted and appreciated. The rate of crime and violence in our community is super high, but in the Lalela classroom our children have a more positive way of expressing themselves and they are taught that we don’t need [to use] violence, discrimination or disrespect to voice our opinions or emotions. We have fewer fights and arguments due to their self-expression through art.

– MS. LIBBIE, TEACHER, DISA PRIMARY



“With Lalela, it’s not simply just an art class. By supporting both learner and teacher projects, Lalela does so much for our school and our kids. It is really such a pleasure to have the Lalela team at Silikamva High School.

– MRS. S. NKALA-NKOHILA, PRINCIPAL, SILIKAMVA HIGH SCHOOL



“Being a single parent is not easy at all. However, as a mother of three who works long hours as a domestic worker, I must say we are blessed in the Masiphumelele community to have a caring organization like Lalela that is trustworthy, cares and is always willing to meet us halfway with our children. We know our children are in a safe place where they are loved and taught well, and even at home the behavior says it all.

– MS. M MJUBAJUBA, PARENT

Western Cape, South Africa

5 Zeitz MOCAA

In collaboration with Cape Town's landmark contemporary African art museum, Lalela brings our after-school program to children from poverty stricken inner-city communities who might otherwise never have had access to the creative arts. Our workshops are held on weekday afternoons at the Zeitz MOCAA Center for Art Education.

School & Welfare Partners: Dryden Street Primary, Ellerton Primary, Harold Cressy High, Mary Kihn School for Partially Hearing Children, Prestwich Primary, St Paul's Primary, Salt River High.

6 Boschendal, Cape Winelands

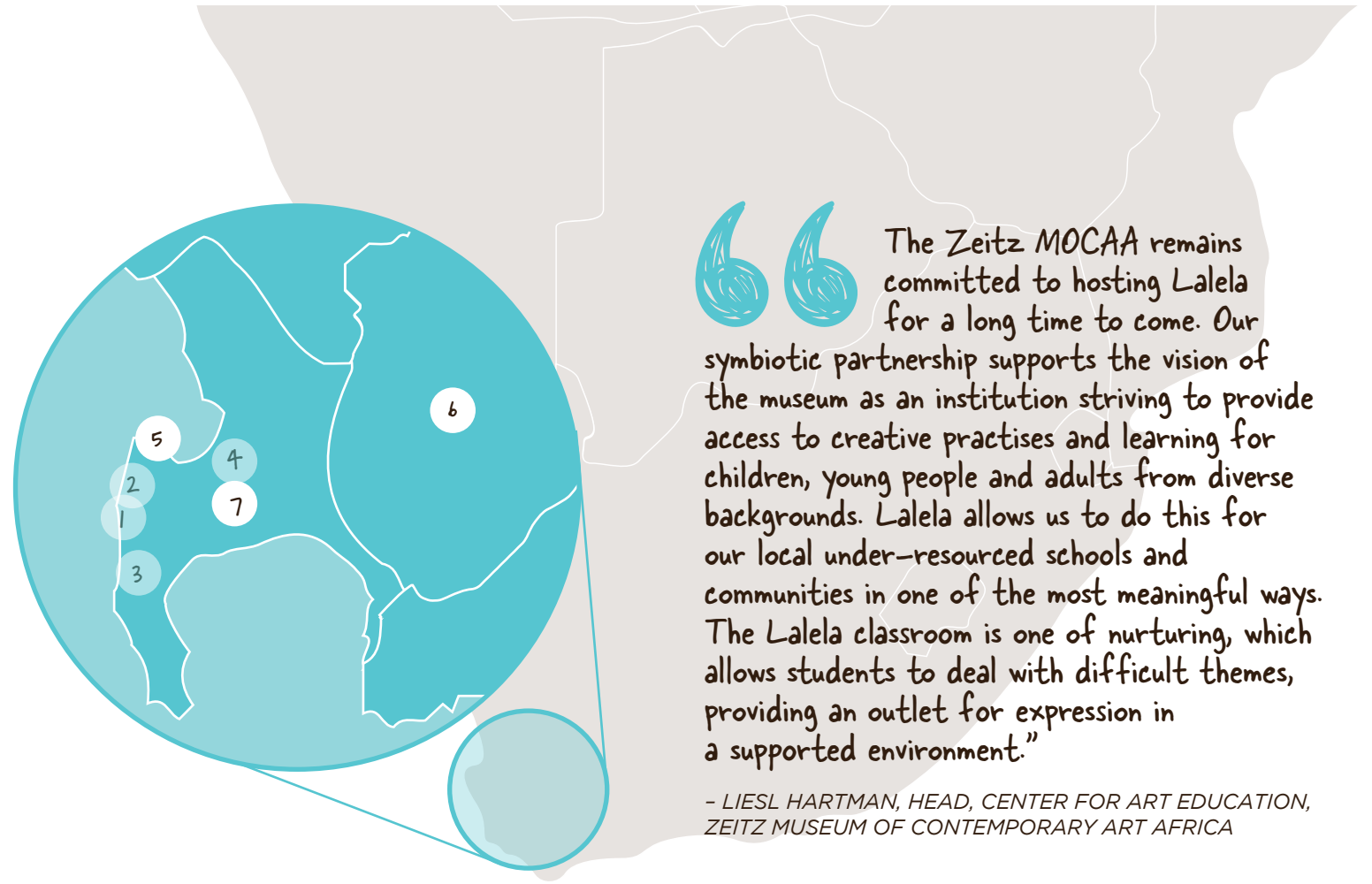
In partnership with Bertha Foundation, Lalela provides our life-changing arts curricula to children from the communities of Pniel and Languedoc at our dedicated classroom at Bertha Retreat at Boschendal Estate. Although adjacent to the affluence of the tourism-rich Cape Winelands, these communities are adversely affected by poverty and indigence, with a notably high school drop-out rate.

School Partners: Nondzame Primary, Pniel Primary

7 Philippi Village

Our latest project with Bertha Foundation launched late in 2020 in Philippi Village, a ground-breaking integrated Community Development Hub in the Cape Flats township of Philippi, considered one of the most neglected areas in the Cape Town Metropole. The introduction of our program was a direct response to the needs of the community, which includes the Siyangena informal settlement. Our classroom is centrally located alongside a container walk shopping center for small businesses, a business center and various social zones.

School Partners: Nomlinganiselo Primary, Dr Nelson R Mandela High, Siyazakha Primary, Sunnyside Primary, Zanemfundo Senior Secondary School.



“The Zeitz MOCAA remains committed to hosting Lalela for a long time to come. Our symbiotic partnership supports the vision of the museum as an institution striving to provide access to creative practises and learning for children, young people and adults from diverse backgrounds. Lalela allows us to do this for our local under-resourced schools and communities in one of the most meaningful ways. The Lalela classroom is one of nurturing, which allows students to deal with difficult themes, providing an outlet for expression in a supported environment.”

- LIESL HARTMAN, HEAD, CENTER FOR ART EDUCATION, ZEITZ MUSEUM OF CONTEMPORARY ART AFRICA

“Lalela has taught me to care, to respect others and to share with others. I enjoy being at Lalela because we are taught good things.

- AYABULELA, GRADE 6 LEARNER, NONDZAME PRIMARY

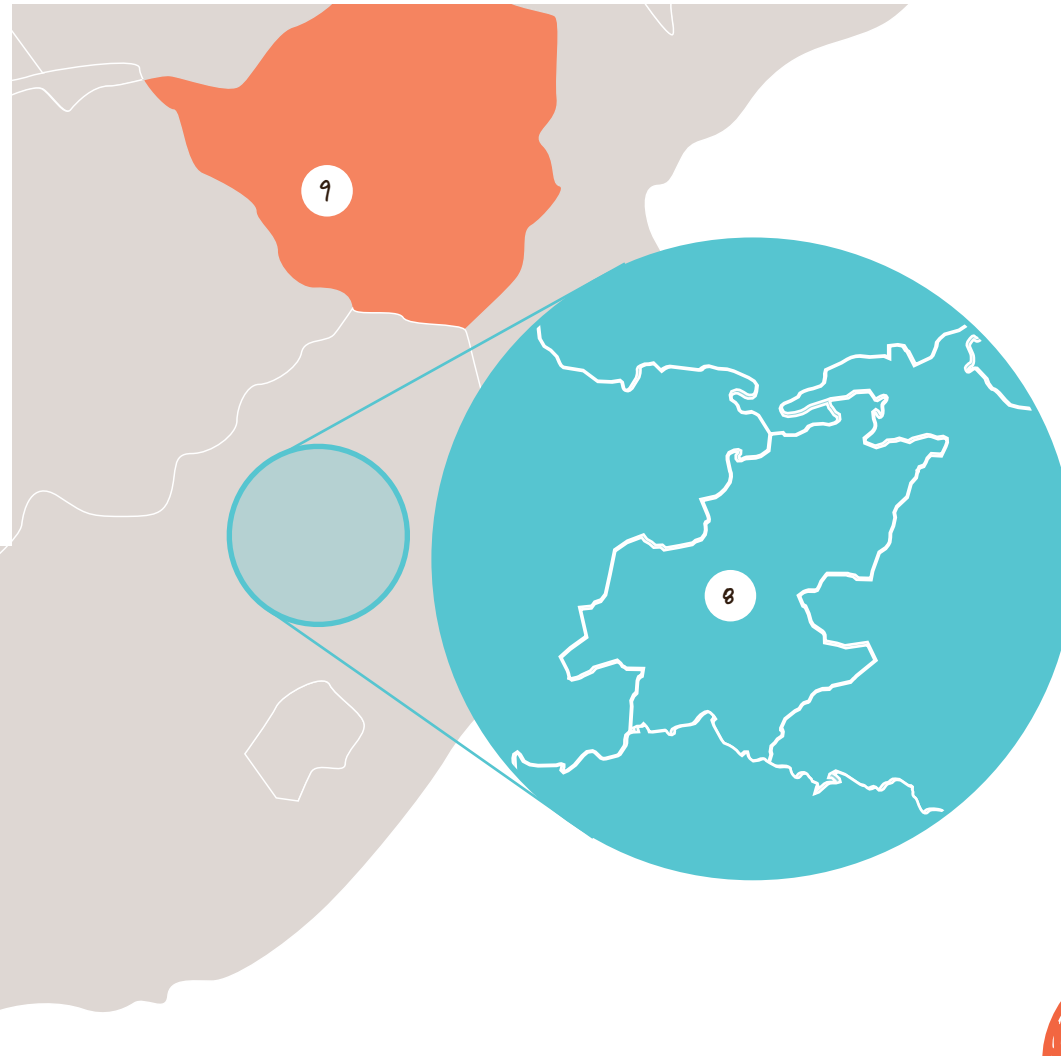
“I hear youth that are less privileged crying out for guidance and asking where the positive role models are that they need in a world in which they have difficulty trusting anyone. Lalela's model speaks to the needs of the youth from disadvantaged communities, helping to restore their sense of hope and to better navigate the difficult challenges that they face in this tough life.

- CHUMA NOZEWU, LALELA FACILITATOR, PHILIPPI VILLAGE

Zimbabwe

9 Zara's Center, Bulawayo

Through our partnership with Zara's Center in Bulawayo, Zimbabwe, we continue to provide arts education to vulnerable children for whom the after-school center is a safe haven.



Gauteng, South Africa

8 Lalela Center for Arts and Innovation, Gauteng

Lalela partners with several schools in Johannesburg's inner city, providing a safe space for learners of multiple ethnicities at our center in the Maboneng district. The area is home to approximately two-million multilingual individuals from South Africa and the greater African continent. Challenges are ever-present as the area suffers from severe poverty and issues such as unemployment, crime, xenophobia, and drug and alcohol abuse. Many of our students are undocumented and therefore face additional challenges such as not being eligible for tertiary studies or job opportunities.

Lalela's partnership with the Tomorrow Trust has brought our arts education program to learners from Soweto and Diepsloot through workshops on Saturday mornings.

School Partners: *Busy Bee Academy, Johannesburg Polytech Institute, JW All Saints College, Kube Schools, Mahlasedi High Metropolitan College, Phumelela Learning Academy, Smartkid Academy, Yatal College.*

“ Since the beginning of the year when our learners joined the Lalela program, their attitude towards school work has improved, and they are more inquisitive and focused than before. I think the Lalela program helps our kids to have self-confidence to manoeuvre through all the school subjects, and they are excelling especially in creative arts. Lalela sessions become the most anticipated event of their week, and on these days, we have seen an improvement in our school attendance.

- MR SJ XULU, PRINCIPAL, YATAL PRIMARY & HIGH SCHOOL

“ Lalela's program is well structured, organized and resourced, and the facilitation team is professional, friendly and knowledgeable. Lalela provides our learners with motivation to learn, and their curriculum enhances our Caps outcomes, as we have observed. Lalela has become a go-to central place for both kids and schools and we see it as a resource adding value to the schooling ecosystem in Johannesburg. As an institution we are very thankful to Lalela for all the support we get.

- FG MUDZEMBWE, PRINCIPAL, SMARTKID ACADEMY.



Special Programs

Female Empowerment

Equipping young women to imagine a better future for themselves is one of the main goals of our Female Empowerment program for high school students. It aims to encourage female learners to remain in school, develop the confidence to excel in their academic studies and build the courage to dream beyond what is expected of them. With South African girls and women under the constant threat of gender-based violence, it is critically important to provide the life skills needed to navigate the many challenges they face every day. The program is currently being formalized so that it can be expanded beyond Lalela's partner schools in Hout Bay.

“ The Female Empowerment program made me realize that, as a woman, I am allowed to have a voice.

- MELODY LEGWALE,
LALELA ALUM

Leadership

Lalela's Leadership program seeks to transform students into role models and strong leaders who can truly become trailblazers of change. In 2021 we relaunched the Leadership curriculum with an intensive four-day workshop at Philippi Village, where we were able to provide the learners with the skills-development programming they missed out on the previous year. We were impressed by the learners' development in their confidence, communication, vision, grit and perseverance throughout the four days. The program is currently offered to learners in Hout Bay.

“ Lalela's Leadership Program pushes our youth that much further to ensure they're able to realize their full potential before stepping out into the big world.

- FIRDOUS HENDRICKS, SENIOR PROGRAM MANAGER

SHEKINAH (19) joined Lalela's Maboneng program in 2016 and quickly became one of its star students and a role model among his peers, not only for his artistic talent but also for his determination to succeed against the odds.

A highly responsible young man, he assumed the role of provider as a teenager, with his family moving home frequently and unable to afford school fees. Regardless of missing a year of school as a result, he still graduated in 2021 and is now a budding entrepreneur, running his own digital marketing agency.

"My community is made up of different people from different backgrounds," he says. "We live in high-rise flats in Johannesburg, so it is difficult to say we have a community because people move around a lot. We live near a park that is used as a drinking spot [of alcohol] by many people, and there are often fights breaking out. If I could change anything it would be to add more space for young people to have activities and increase security.

"Lalela for me was my second home. What I liked about it was the openness of the facilitators and the activities that we did. I also liked the confidence that I got, especially from initiatives to help us boys understand how to become young men of value with goals and ambition. In addition to my artistic skills, through Lalela I have learned to respect myself, how to work with different people and not discriminate against people based on what I dislike about them. I also learned that mistakes are part of life and that you can never grow as a person if you fear making mistakes.

"I am currently working on building my business in digital marketing. My dream for the future is to run multiple businesses and grow my empire."



In addition to my artistic skills, through Lalela I have learned to respect myself, how to work with different people and not discriminate against people based on what I dislike about them.





2021 Impact Year in review

In a year marked by continued upheaval and uncertainty due to the Covid-19 crisis, Lalela's role within the communities we serve was clearly defined. Inspired by our value of 'seeing challenges as opportunities', we enhanced and strengthened our programs, extended our curricula to benefit other schools and communities, and provided meaningful support and aid to our learners and their families.



From left to right: Hout Bay High students Genevieve, Beuren, Faith, Michelline, Ryan, Roxelle, Tarren and Nikita.
Circle: Hout Bay High's Faith and her awards, including top honors for English Home Language.



Lalela's Silikamva High achievers. From left to right, back: Live, Peter, Shaun, Kamva, Sisanda Banda. **Front:** Panashe, Yolanda, Dickson.

Grade 12 Exam Results

We couldn't be prouder of the Lalela students who passed their final school exams with flying colors despite the tremendous challenges faced during their Grade 12 year. Out of the nine Lalela students who graduated from Silikamva High, eight achieved an impressive Bachelor's degree pass. At Hout Bay High, the 12 learners who were enrolled in Lalela's after-school program did similarly well, with five achieving a Bachelor's pass.

Saluting our Valedictorians

A highlight of the year was witnessing another generation of Lalela Grade 12 students celebrate their valedictory. What made it all the more special was the fact that most learners in Hout Bay High's Class of 2021 had been in the Lalela program all the way from Grade 2.



Silikamva Grade 12 star student Faith shows off her trophy!

55,000+

Number of learners who have experienced Lalela's life-changing arts curriculum to date.

30

Number of low-fee, no-fee and other schools in partnership with Lalela

100%

Pass rate for Matric (Grade 12) final exams, for Lalela learners at Silikamva and Hout Bay high schools



Virtual Vacation Programs

Our scheduled mid-year vacation workshops might have been derailed by an extended hard lockdown, but that didn't stop us from continuing our activities in the virtual space. We distributed packs of art materials and activity books across all Lalela programs to ensure learners were kept occupied and creatively engaged whilst being stuck at home. Through our WhatsApp classrooms, we were able to stay connected and check in on their progress.

One of the most surprising outcomes of our virtual vacation programs was a strengthening of family bonds as a result of parents working with their children on their art projects.

- FIRDOUS HENDRICKS, SENIOR PROGRAM MANAGER

Addressing Gender-Based Violence (GBV)

Lalela teamed up with The Change Collective to develop a curriculum with the aim of promoting gender equality and tackling the stereotypes and prejudices that lead to discrimination and GBV. The **#GivethemACrown** curriculum was rolled out at schools across the country, and we made a special project of it during our April vacation program. In this project, the crown is used as a symbol for the uniqueness of each of our learners, who created their beautiful and diverse pieces for a partner after sharing their stories with each other through a guided interview process. Our learners emerged with a deeper understanding, respect and empathy for those who identify with a different gender to themselves.

Food Relief

Through 2021 we were able to provide a tangible level of care in the communities we serve by distributing monthly vouchers for groceries and essentials or food parcels, with gratitude to The Kirsh Foundation. The Covid-19 emergency food aid fund gave us that special opportunity to face the massive challenge of hunger head on, making a proper impact on the lives of those suffering real economic distress.



The Bonteheuwel community is truly ravaged by poverty and substance abuse. Many of our learners are part of child-headed households or they are raised by grandparents, under very difficult circumstances. The food parcels we receive from Lalela are distributed in such a way to ensure that no child goes to sleep hungry. We are very grateful for all you do in aid of this community.

- MRS DN AFRICA-KARELS, PRINCIPAL, DISA PRIMARY

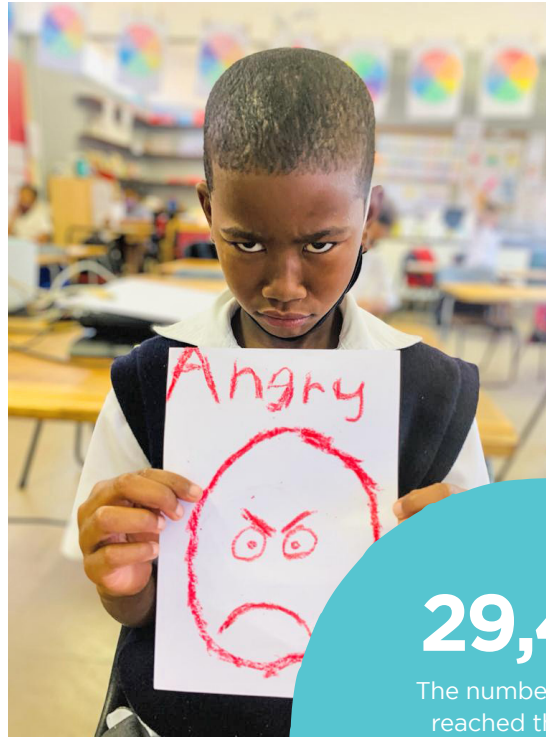


450

Children received a daily hot meal from Sindy's Kitchen after school and during the school vacation. Lalela partnered with the tireless Sindiswa Manxeba, who operates her soup kitchen from her home in Imizamo Yethu.

9,600

Food parcels and vouchers distributed to Lalela learners and their families



29,459
 The number of learners reached through our training of **214 educators** from **214 schools** in the Western Cape, in the first part of our trauma guide workshops in 2021



Lalela's Trauma Curriculum

The advent of Covid-19 and subsequent lockdowns compounded already challenging circumstances for vulnerable learners, many of whom are deeply affected by trauma. Developed the previous year, in 2021 Lalela's comprehensive 'Guide for Educators Working with Learners Affected by Trauma' was presented to educators in a series of virtual modules in partnership with the Western Cape Department of Education. Furthermore, the curriculum received a three-year endorsement by the South African Council for Educators. The training rollout was set to continue throughout 2022, covering all nine South African provinces.

Educators are often the first point of contact for learners after a traumatic event, or need to assist learners in overcoming behavioral difficulties as a result of trauma. The carefully formulated arts-based activities and exercises in this guide are highly effective tools that educators can easily incorporate into lessons as a way to ground learners and help them to focus and self-regulate despite their emotional circumstances.

“The teacher training workshops were well received by our teachers and we found them very informative. This program has already had a direct impact in the classroom.”

– Ismail Teladia, Senior Curriculum Planner: Life Orientation/Life Skills, Western Cape Education Department

“Thank you so much for facilitating such a positive and relaxing learning environment. Your depth of understanding for the topic and your ability to present the information in such an interesting way will be one of the most memorable events in Life Orientation/Life Skills in WCED. I believe we and eventually our learners can benefit immediately from the activities in the guide.”

– Colin Green, Western Cape Education Department, West Coast District

Anonymous feedback from teachers on the training

“I learned how to engage with learners who are experiencing trauma.”

“I learned how important creativity and art are in helping learners to release their emotions.”

“I learned how to help learners regulate and express their emotions in a healthy way.”

“I learned how to manage stressful situations better in class.”

Highlights

Even as we grappled with our 'new normal', Lalela learners along with partners and friends of the organization got to enjoy a host of meaningful and joyful activities and interactions.



1. Welcoming our (Virtual) Stanford Intern

'Together Apart' best describes our first-ever virtual internship as part of Lalela's long standing partnership with the Stanford Bing Overseas Study Program. We were delighted to welcome Flora Troy to the team for eight weeks of Zoom meetings and M&E projects during the US summer.

2. Building Community in Philippi Village

Among a host of creative collaborations with our partner Philippi Village, two that stood out were a giant mural painted by learners alongside top graffiti artists, and the design and decorating of the coop that houses the Village's happy hens for its Amaqanda egg-production project.



3. Eco-inspired Mural at V&A Waterfront

Learners from Lalela's Zeitz MOCAA program made their mark on the pioneering green-energy building, The Ridge, at the V&A Waterfront. While learning about street art as a contemporary cultural practise from artist Aweh Migo, the learners also got to grips with environmental issues.

4. ICTAF Virtual

We showcased our collaborative project with celebrated artist Blessing Ngobeni and students from Lalela's Maboneng program with a small inclusion in the Investec Cape Town Art Fair's virtual program.

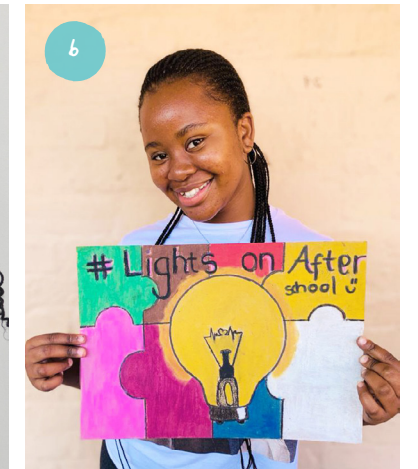
5. Gallery Visits

Lalela friends A4 Arts Foundation and Stevenson Gallery in Cape Town created memorable experiences for our students, respectively hosting groups at exhibitions by Lindokuhle Sobekwa and Mikhael Subotzky, and celebrated artist-activist Zanele Muholi.



6. Keeping the Lights On

Our team and students were excited to participate in the #LightsOnAfterSchool global campaign, which highlighted the significant impact that after school programs make in supporting students, families and schools, especially during a time of crisis.



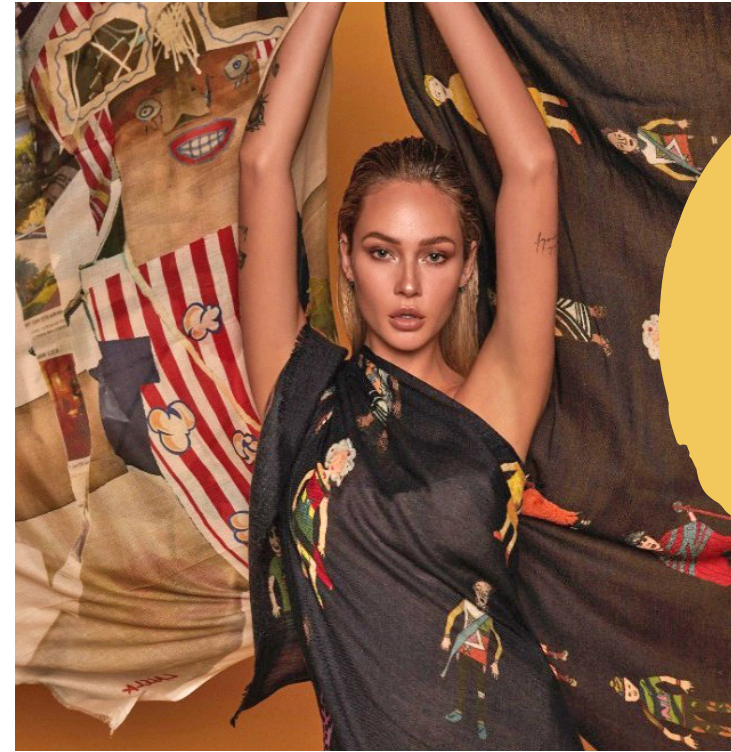
7. 16 Days of Activism

Students at our Masiphumelele High program created powerful posters addressing gender-based violence and other social ills with which they are confronted in their community, blazing the trail to become positive role models and active citizens.

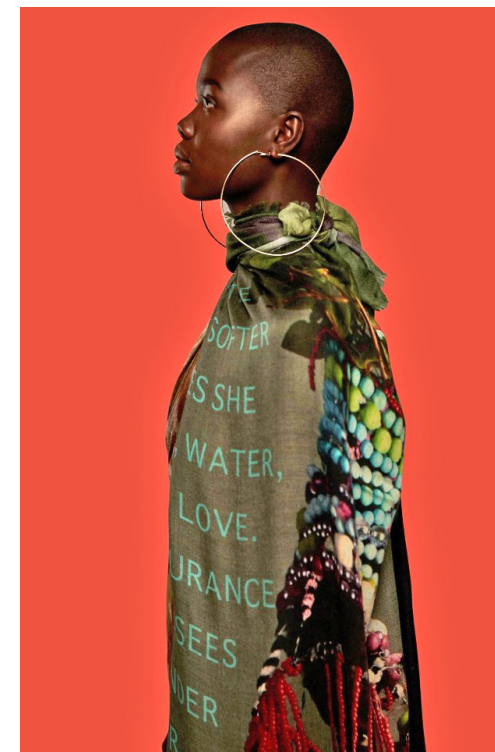
Lalela Scarf

Lalela Scarf is integral to the organization's sustainability. Products ranging from luxurious scarves to accessories such as leather bags and luggage tags feature inspiring designs from the young artists in our programs.

These products are sold directly to the public or to high-end retail outlets, locally and internationally, and are available to purchase on www.lalelascarf.com or www.lalelascarf.co.za



Lalela artists Roxzelle, Ryan and Genevieve in scarves featuring their designs.



100%

of the profits from each sale go towards helping Lalela learners find their voice and overcome the narrative of poverty through the transformative power of arts education.

2,369

Lalela Scarf products sold in 2021

45

Lalela Scarf retail partners internationally



Impact Stories

AVIWE (17) is a talented young artist and high school learner currently in Lalela's Masiphumelele program. When he finishes school he wants to study medicine at university, and his hope is to become a cardiologist and found a pharmaceutical company specializing in medication that will help people suffering from heart diseases.

"What I don't like about my community is how a majority of our youth are contributing to South Africa's statistics of substance abuse and teenage pregnancy. If I could change anything it would be the mentality of our youth, especially teenagers who believe they have to be seen as 'cool' in order to fit in. If they didn't, they might be less pressured to do something where they don't fully understand what the consequences will be.

"The art lessons at Lalela have brought up skills of mine which I never knew I had. I've also learnt many ways in which I can approach life when I've finished school. I believe the only way to experience more of what life has to offer is to work hard and dedicate ourselves to our goals. My dream for my future is to become successful and live the best life with my family, and also to try to help others to the best of my capabilities.

"The message I would give to a young learner is to try and live your life in a way that will leave you with no regrets in the future, persevere through all of life's challenges, and never lose sight of your goals."



If I could change anything it would be the mentality of our youth, especially teenagers who believe they have to be seen as 'cool' in order to fit in.



Our Sustainable Future

Lalela's future impact relies on sustainable and diversified funding, as well as strategic alliances with committed programmatic partners. We aim to derive more investments from South Africa through interest in education and transformation.

Our focus is on funding Lalela's classrooms – both in physical and virtual spaces – through the development of corporate sponsorships, a private donor and foundation platform, and campaigns across our digital platforms.

The average size of a physical Lalela classroom is 24 learners, served by a Lalela facilitator and co-facilitator who have undergone training in our proprietary curriculum and methodology. Through virtual workshops held in WhatsApp classrooms, we are also able to provide our life-changing arts curricula outside of the traditional structures. In both instances, learners are equipped with unique experiential learning and support, which extends beyond the classroom and into the community.

If we are able to fulfill our core funding appeal along with core funding support, we can sustain our programmatic future.

Visit our website: www.lalela.org



Our Financials

Statement of Financial Position as at Decemer 31, 2021 and 2020

Figures in USD	2021	2020
Assets		
Cash	\$ 393,127	\$ 338,266
Unconditional promises to give	65,835	70,409
Accounts receivable	63,160	113,166
Prepaid expenses and other assets	30,101	28,656
Property and equipment, at cost, net of accumulated depreciation and amortization	4,925	9,849
Total Assets	\$ 557,148	\$ 560,346
Liabilities and Net Assets		
Liabilities		
Accounts payable and accrued expenses	\$ 88,265	\$ 45,006
Loan payable - Paycheck Protection Program	41,607	29,835
Total Liabilities	129,872	74,841
Net Assets		
Without donor restrictions	427,276	485,505
Total Liabilities and Net Assets	\$ 557,148	\$ 560,346

LUTZ AND CARR
REGISTERED AUDITOR

NEW YORK CITY
NEW YORK
NOVEMBER 2022

Statement of Activities as at Decemer 31, 2021 and 2020

Figures in USD	2021	2020
Changes in Net Assets Without Donor Restrictions		
Revenue and Public Support		
Contributions and grants		
Foundations	\$ -	\$ 41,678
Individuals	433,320	420,725
Corporations	23,075	21,985
Special events	378,349	-
Loan forgiveness - Paycheck Protection Program	29,835	-
Merchandise sales	103,878	75,909
Interest income	20	63
Total Revenue and Public Support	\$ 968,477	\$ 560,360
Expenses		
Program Services	811,461	445,677
Supporting Services		
Management and general	142,166	146,523
Fundraising	73,079	98,603
Total Supporting Services	215,245	245,126
Total Expenses	1,026,706	690,803
Decrease in net assets	(58,229)	(130,443)
Net assets, beginning of year	485,505	615,948
Net Assets, End of Year	\$ 427,276	\$ 485,505



Strategic Partners



Without a doubt, Lalela is the most important youth arts education program operating in the country. It is a privilege to be able to interface with Lalela's work, exchanging information, sharing skills and learning alongside their extraordinary facilitators. The fundamental principle from which Lalela's work emanates – that arts education is vital; that the skills of curiosity, openness and innovation are transferable across disciplines and can be applied in any and all situations – is one we wholeheartedly believe in and work to make manifest through A4's Academy. Lalela's work of arts education is a lifeline; an offer to imagine the world beyond the very real structures in South Africa – those political, social and economic – that suppress the imagination and work against hope and possibility. Thank you to Lalela's team and the phenomenal contribution you make to the lives of young South Africans."

– Sara de Beer, Editor, A4 Arts Foundation



We are continuously astounded by the immense role Lalela Project plays in pivoting young lives. It is a selfless task that takes many years of dedication and experience. Their team has shown pedigree and commitment beyond the norm. We have worked with The Lalela Project since 2013. The V&A Waterfront sees its role on the continent to be a platform that facilitates and champions art and design, to support entrepreneurship and innovation, lead the charge on sustainability, and drive positive social and economic change. This vision is ideally aligned to the values and principles that drive the impact of the Lalela Project. We are therefore deeply committed to its work and continue to be extremely grateful for our partnership with this institution..

– Henry Mathys, Program Manager: Senior Manager: Social Impact and Food Ecosystem Head, V&A Waterfront



Impact Stories

DIELA (16) has been a dedicated Lalela participant since joining the program at Sentinel Primary in Hangberg as a Grade 3 learner in 2014. Now a standout student at Hout Bay High, she's also enrolled in our Leadership program, pursues extra-mural music studies, and is well respected by her peers and teachers. Despite her circumstances, she remains positive and optimistic, and has the most infectious laugh.



At Lalela I learnt to be kind, to respect others, and that sharing is caring. I learnt to be bold and to be confident in myself, to have integrity and to be committed.

"My community is a small place where everyone strives for survival. People want to make a difference in their lives. They still have dreams but don't know how to fulfil them. I would like to change how people see things.

"At Lalela I learnt to be kind, to respect others, and that sharing is caring. I learnt to be bold and to be confident in myself (which I lacked, but I'm getting there), to have integrity and to be committed. I learnt that there are no mistakes when making art or being creative, and to trust in your abilities. What I like about Lalela is that it's non-judgmental, everyone is welcomed warmly and wholeheartedly, and it helps those in need. Most importantly, it makes you forget about your problems and instead fills your mind with positivity and happiness, and creates a safe environment for everyone.

"After school I'm thinking about becoming a lawyer or a businesswoman, and I would like to travel the world. While I'm still not sure of my career choice, I'm working hard, because I am my parents' first daughter and bread winner of the family. I believe hard work pays off big time."

Our Board

US Board

Chairperson:

Andrea Kerzner

Secretary:

Terry Torok

Treasurer:

Norman Cohen

Michael Beneville

Colin Finkelstein

Wendy Fisher

Lisa Kaye

Vanessa Kerzner

Mark Landis

Jesse Robert Lovejoy

Shaun Osher

Sandy Tabatznik

Michele Wiltshire

Ronald Wohlman

SA Board

Chairperson:

Andrea Kerzner

Secretary:

Caro Macdonald

Treasurer:

Suzanne Annenberg

Abigail Bisogno

Elana Brundyn

Oliver Nurock

Pulane Kingston

Mandla Sibeko

Sandy Tabatznik

Marco Van Embden

Advisory Board

Chairperson:

Ronald Wohlman

Emily Beare

Greg Calejo

Colin Cowie

David Friedman

Mariane Ibrahim

Kweku Mandela

Edward Nahem

Renee Rolleri

Nina Runsdorf

Mark Rutstein

Lara Stein

Carmen Zita

Trustees

Andrea Kerzner

Abigail Bisogno

Marco Van Embden



Our 2021 team

New York Head Office

Chief Executive Officer & Co-founder:
Andrea Kerzner

Chief Creative Officer & Co-founder:
Sandy Tabatznik

Program & Communications Administrator: Melissa Jester

Cape Town Head Office

Executive Director:
Leigh Robertson

Senior Program Manager:
Firdous Hendricks

Program Manager: Partners/M&E:
Sean MacGinty

Office Support:
Maxine Christians, Zimasile Sibotoboto

Interns:
Evelyn Kanyekwele, Melody Legwale, Anelisa Mvkwendlu



From left to right, back: Thandi Gaji, Rowan Roman, Nosiphiwo Nojavu, Chuma Nozewu, Amy Cornfield, Chanté Marajh, Nwabisa Ndongeni, Zama Sibitoboto, Siyolisi Bani, Mark Oppelt. Front: Firdous Hendricks, Tandi Makobeni, Leigh Robertson, Meliny Swartz.

Cape Town facilitators

Art Facilitators:
Siyolisi Bani, Amy Cornfield, Thandi Gaji, Tandile Makhabeni, Chanté Marajh, Nwabisa Ndongeni, Nosiphiwo Nojavu, Marilyn November, Chuma Nozewu, Mark Oppelt, Rowan Roman, Meliny Swartz

Maboneng Precinct Lalela Center for Arts and Innovation (Gauteng, SA)

Program Manager: Vika Mjoka
Art Facilitator: Thandiwe Sibanyoni
Art Co-facilitator: Portia Qhemekoane
Intern: Tamah Ndlovu

Tomorrow Trust

Vika Mjoka

Zara's Center (Zimbabwe)

Art Facilitator: Rebecca Gopito



Follow our journey



www.lalela.org

Lalela Office, South Africa

+27 21 790 1108

firdous@lalela.org

36 Albert Road, Hout Bay, Cape Town 7806

PBO: 93 0036496

NPO: 090608

Lalela Office, New York

+1 212 579 2480

melissa@lalela.org