

LALELA

LIFE-CHANGING ART

ANNUAL REPORT

2022



A young girl with dark hair, wearing a white lab coat, is holding a clear plastic tray filled with colorful oil pastels. She is looking down at the tray with a focused expression. The background is a laboratory or classroom setting with bright lights and other people in white coats, slightly out of focus.

Our Mission

Lalela provides educational arts for youth from under-resourced communities to spark **creative thinking** and awaken the **entrepreneurial spirit**.



Contents

Dear Friends _____	04	Communities _____	13	Lalela Scarf _____	32
Our Story _____	05	Special programs _____	20	Financials _____	33
Outcomes _____	08	2022 in Review _____	21	Sustainability _____	34
Methodology _____	09	2022 Curriculum _____	26	Partners _____	35
Theory of change _____	10	Highlights _____	28	Our People _____	36
2022 Overview _____	12	Holiday programs _____	30		

Dear Lalela friends,

As we reflect on 2022, it's hard to believe how far we've come since the unexpected upheaval of our lives three years ago. The impact of COVID-19 has been profound, testing our resilience as individuals, organizations and societies. However, here at Lalela, we found ourselves at the dawn of 2023 with a deep sense of gratitude and accomplishment.



Despite another year of challenges, we returned to our classrooms at full capacity, navigating delays caused by new variants and the echoes of global disruption. With purpose, we emerged not just intact, but transformed for the better, showcasing adaptability and dedication to the communities we serve.

The theme guiding our 2022 programming, "An Art Odyssey," became a profound journey of creative expression, skills development, art activism and community care. It symbolized a departure from the familiar, an exploration of a post-COVID world.



The transition from virtual classes to in-person sessions marked a significant shift. Masks came off, and our learners, for the first time in three years, stepped out of their homes and communities. "An Art Odyssey" became a voyage into uncharted waters, a discovery of interconnectedness, and a celebration of conquering the challenges posed by the pandemic. Our outings expanded horizons, fostering new connections and inspiring active citizenry in our young participants.

Returning to school in South Africa brought challenges of behavioral issues and academic pressures stemming from the collective trauma caused by the pandemic. Lalela's Resources Guide for Educators Working with Learners Affected by Trauma became a beacon of support, offering crucial interventions and training to schools across the Western Cape, Gauteng, KZN and Mpumalanga. The guide helps teachers impart valuable skills in self-regulation, grounding and debriefing to their learners. This initiative allowed the impact of our work to expand nationally.

Thanks to the Kirsh Foundation, we were able to extend our support beyond the classroom. Their generosity enabled us to provide food parcels and vouchers to the families of our Lalela learners, offering much-needed relief to communities economically devastated and still in recovery. This initiative underscored our commitment not only to education but to the holistic well-being of the communities we serve.

2022 was a year of triumph over adversity. We didn't just survive; we conquered, and in doing so, we crafted a new reality. Our learners not only reconnected with the world but also ventured beyond the confines of their own artwork, embracing the interconnectedness that binds us all.

As we step into the future, we carry the strength gained from overcoming a global pandemic. The impact we've made is a testament to the collective effort of our dedicated team, supportive partners, and the resilient communities we serve. The outings, connections, events and art created were not just moments; they were milestones in a transformative journey.

We extend our heartfelt gratitude to each one of you who walked this path with us. Your support has been instrumental in our success, and we eagerly anticipate continuing this impactful journey together in the year to come.

In gratitude,

Andrea Kerzner
Co-founder & CEO

Firdous Hendricks
Executive Director



LALELA (la-le-la)

Lalela is an isiZulu word that means **“to listen”**, and it is at the heart of what we do. By listening to children’s stories and each community’s needs, we are able to understand the challenges and, in turn, provide creative solutions and a way forward.

Our Story

Lalela’s educational arts program has touched the lives of thousands of youths since 2010, when our story began. From a gathering of 20 students in the township of Imizamo Yethu in Western Cape, South Africa during the Soccer World Cup, our program has expanded its reach to a multitude of under-resourced communities in Cape Town, Johannesburg and Zimbabwe.

In partnership with low-fee and no-fee schools, and other youth-development organizations, we host workshops every day after school in the hours when children are most vulnerable to the negative influences in their communities. We start from as early as age six in developing the art of imagination, and continue through to grade 12.

Lalela’s curricula are built at the intersection of arts education, academic achievement and critical life skills, with the aim of activating whole-brain thinking and developing the creative potential of the youths in our program. In so doing, they are encouraged to complete – if not excel at – their academic studies, find purposeful life goals, go on to pursue meaningful careers, and become role models in their own right.

“Art is a powerful tool to discern selfhood and its position in a universal context. We use that power to introduce the many ways in which art can be a vehicle for personal and collective development. The core of Lalela’s methodology is always a social concept – where everything begins with a learner’s experience, observation, thought and feeling. Through art-making, we see them make active decisions about themselves and the world they live in.”

– Simamkele Sitwebile, Lalela Facilitator at Zeitz MOCAA

Why the arts?

The arts are often the first subjects to be removed from school due to a lack of resources, yet the importance of creativity in a child's life is significant. Research proves that arts education enriches the lives of students, increasing their academic, social, mental and economic well-being over the long term.



“Art is impactful as a vehicle to drive social change, through equipping young people with the critical life skills they need to become well rounded, active citizens. This is evidenced by the countless young people who have been in our programs and have gone on to defy the odds and have meaningful careers and endeavors beyond high school.”

- Rowan Roman, Lalela Program Development Manager and Facilitator in Cape Town

“Lalela's use of the arts to benefit our learners allow for the development of a more complete human being that is balanced and able to express their inner self through various forms of expression. The method we use is both internal and external, allowing the artist to interpret and communicate their inner vision and grow from there.”

- Chuma Nozewu, Lalela Coordinator and Facilitator at Philippi Village Cape Town

“Through art and creative expression, our learners are able to develop their imagination and think outside the box to create positive solutions to the challenges they face. I have seen a sense of freedom in the learners at Lalela as they engage in the artistic process. This builds a higher self-esteem as they create without boundaries. By exploring the world and others through exposure to art, they also become very considerate and empathetic towards others.”

- Thandiwe Sibanyoni, Lalela Facilitator at Maboneng, Johannesburg

Our Values

- A** Always inspire with creativity
- R** Reimagine challenge as opportunity
- T** Trust we can be Trailblazers of change

Makhadzi Livhadi (19) is currently pursuing a BCom degree in Industrial and Organizational Psychology with a focus on Labor Relations Management at North West University in Potchefstroom.

Growing up in my community was not easy. It was a place where success was narrowly defined as merely passing grade 12. If it weren't for my family, I wouldn't have even known about different career paths. In this environment, it was considered "cool" to associate with individuals who were involved in drug use. If you didn't become a parent by the age of 16, you were labelled as infertile. People's mindsets were narrow and unchallenged.

I am who I am because of the impact of Lalela, an organization that shaped my character. It instilled in me the importance of always standing out, making a difference, and striving to be the best version of myself.

I joined Lalela in grade 7 in 2017. I was drawn to it because I had observed that learners who were part of Lalela were fearless, courageous, talented, and always stood out. I yearned to understand what set them apart, and I am now a living testament to the positive impact of Lalela.

Through Lalela, I learned to bring creativity into everything I do and to always think outside of the box. It was within Lalela that my entrepreneurial spirit was awakened, eventually leading me to study Industrial and Organizational Psychology, with a focus on Labor Relations.

Lalela holds a special place in

my heart. I've always translated its name to "Thetshelesani," which means "listen." I firmly believe that through attentive listening, one can gain a wealth of knowledge. Lalela is more than an organization to me – it is my home. I consider myself a Lalela child, and I believe that every child deserves a home like Lalela.

I lost both my mother and father at a young age and Lalela became my haven. Within its embrace, I found parental figures – a mother who constantly encouraged me to be my best self, never allowing me to succumb to despair when faced with challenges. Ma'am Portia and Mr. Vee, the father figure I had never known, assisted us with our studies, provided guidance and counselling, made learning fun, and taught me skills I never thought I'd master. They always had my back, and for that, I will forever be grateful to Lalela for shaping me into the person I am today.

I am determined to make Lalela known across the globe, highlighting the positive impact it has on people's lives, including my own. In conclusion, I have one message to share with youth: never allow anyone to stop you from achieving your dreams. You are the master of your destiny, so dare to dream big, for life's journey extends far beyond your current circumstances.



"I consider myself a Lalela child, and I believe that every child deserves a home like Lalela."



Outcomes

Lalela's arts education program contributes to six outcomes, which are key indicators of life and academic success.



Academic achievement

For learners from under-resourced communities, arts education increases school attendance, motivation to learn and academic success across the curriculum.



Critical problem-solving

Learners who study the arts re-evaluate their work as they go and develop advanced problem-solving skills, adapting their artwork to new perspectives and materials. As a result, they are more likely to approach problems with patience and innovative thinking.



Communication & collaboration

Arts education provides learners with a wide variety of collaborative projects, teaching them how to work in a team and how to navigate each other's strengths and weaknesses.



Grit & perseverance

Learners in the arts receive ongoing, constructive feedback and come to understand it as a tool for improvement. Artists constantly draft, practice or rehearse their work before its presentation. They develop the humility and grit to acknowledge criticism and adjust their art as needed.



Creativity & innovation

At Lalela, education is the development of learner creativity and innovation. Learners are not confined to inside-the-box thinking. Instead, they are continually asked to try new things and seek alternatives. This kind of creative thinking can be a key step towards innovation, which is essential in an increasingly competitive world.



Confidence & leadership

The presentation of their work, whether via exhibit or performance, gives learners a sense of accomplishment. As a result, they develop a strong sense of identity and confidence in their ability to interpret concepts and express their opinions, driving their ability to perform as leaders in their communities.



Our Methodology

Lalela's unique methodology is one of the key factors to our program's success.

Lalela's educational arts program is designed to create permanent, positive change in the lives of our learners, equipping them with the mindset to design a more certain future for themselves.

Our curriculum and facilitation methods are supported by thorough needs assessments, rigorous training of facilitators and diligent implementation, as well as community-based strategic partnerships.

Ideas, Art and Music (I AM) form the signature components of every Lalela curriculum.

Our methodology, in development since 2011, connects the arts to everything important in a child's life, from core academics to critical life skills. At its heart is our philosophy that we do not teach learners what to think; rather, we provide experiential learning that encourages them to think for themselves.

Through facilitation and experiential learning:

- Knowledge is gained through participation, experience, and reflecting on what has been learnt.
- Learners are provided with resources and structures to explore, learn, innovate and develop.
- Learning is collaborative – everyone has something to teach and something to learn. Learning is built on the existing strengths and life experiences of the learners.
- Transformation and behavior changes are achieved through the disruption of negative behavior patterns using arts-based activities, games and discussion groups.
- The whole learner becomes the focus: body, mind, thoughts, feelings, actions, and the totality of being.

Lalela has developed a unique, replicable model that can easily be implemented in other communities.

Lalela supports and is aligned with these Sustainable Development Goals:



"Ideas, Art and Music can be viewed

as pillars of holistic creative development, in both thought and practice. It's a relevant, learner-centered opportunity for learning art and life skills as an additional benefit to their scholastic development, which deepens their sense of self, community and the broader world around them."

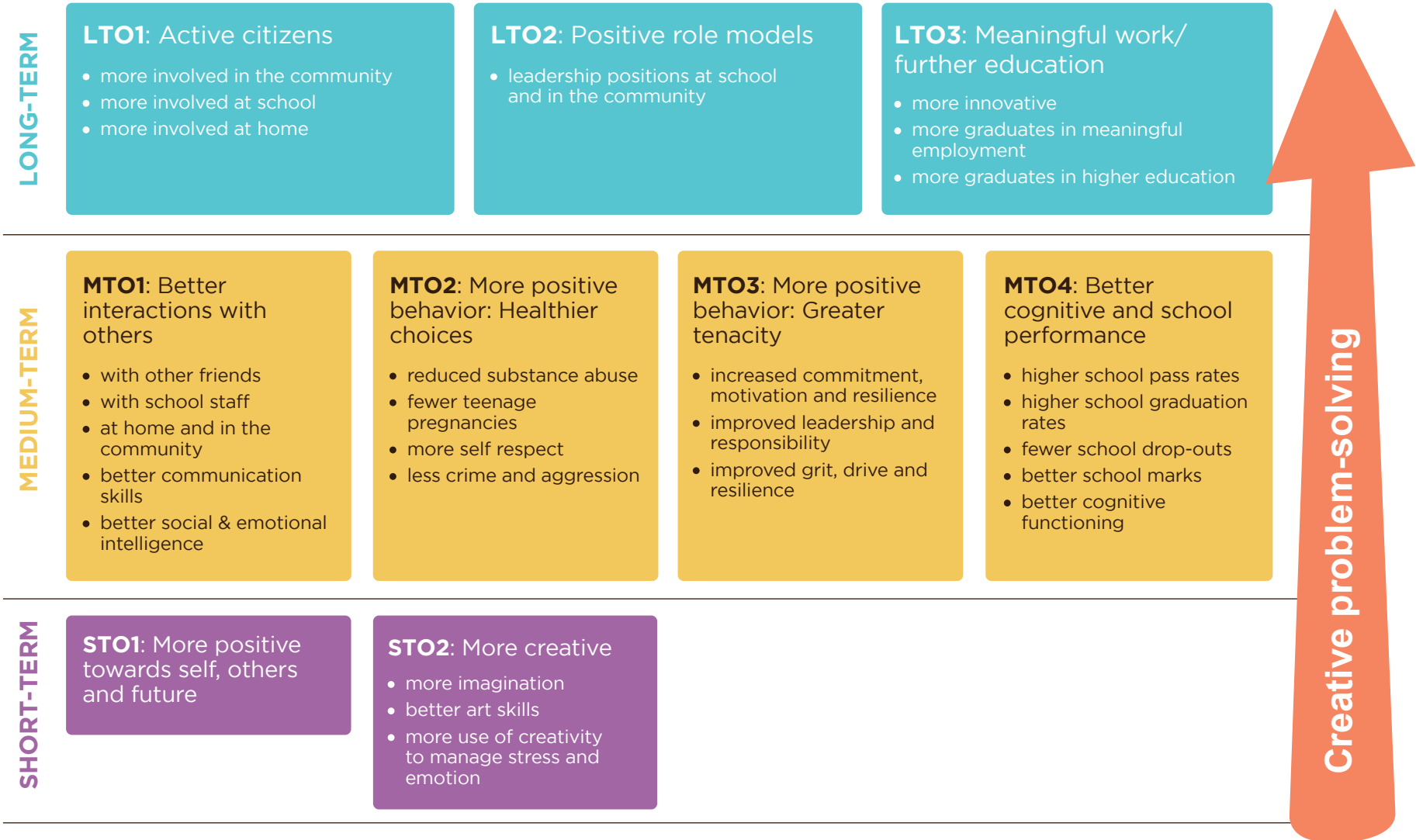
- Rowan Roman, Lalela Program Development Manager and Facilitator in Cape Town

Our theory of change

Our Monitoring and Evaluation Learning (MEL) model has been developed to measure the impact of our program on a short- and long-term basis.

The Lalela MEL model has been developed in a participatory manner and is firmly based on actualities on the ground. The MEL model has been designed to be integrated into Lalela’s processes and operations so that it is part of the work flow at all levels. Our innovative Theory of Change allows us to strengthen and refine the development of our arts education program and ensures that we remain focused on the objectives. Our Theory of Change is based on the understanding that innovative and creative young people will contribute to social and economic development.

Indicators





Simphiwe Bendle (25) is a photographer, filmmaker and the creative director at KWANTU, a clothing company he founded after completing a Bachelor of Arts in Film Production at the SAE Institute. He joined Lalela during the time that South Africa hosted the World Cup in 2010 and Lalela proved to be the social and creative outlet he craved.

Growing up in Imizamo Yethu, a township just outside of Cape Town, has been quite a challenging but educational journey. I've been here since a young age and I've witnessed everything change before my eyes. Some of my peers joined gangs and had to fight over territories. Some of them even lost their lives in gang violence. It was challenging because some of these guys were friends we grew up with, and we lost them to gang violence. However, organizations like the Lalela Project provided a safe space for us and kept us occupied and away from the streets.

I joined the Lalela project in 2010. I was one of many kids who participated in the program during the World Cup tournament to learn art at the Iziko Lobomi (Center of Life). Since I joined and graduated, I've learned a lot

about art and how one can make a living from it. I've gained a lot of respect from individuals in the community who look up to what I do. Some aspire to do the things I do, whether it's film, photography or design. I've had opportunities I never thought I'd come across and made valuable connections through Lalela.

For me, Lalela means a lot of things. It's a safe space where one can be free to express themselves through art, drama or music. It's an escape from reality, where one can create their own reality, their own world. I hope in the future they can transform more lives through art. I see Lalela in many under-resourced communities, making an impact.

The only words of encouragement I'd like to share with the youth of South Africa is that nothing is impossible – just do it.



“I hope that in the future Lalela can transform more lives through art. I see them in many under-resourced communities, making an impact.”

Lalela Overview 2022

SCHOOL PARTNERS

Cape Town

Hout Bay:

- Hout Bay High
- Silikamva High
- Oranjekloof Primary
- Sentinel Primary

Bonteheuwel:

- Disa Primary

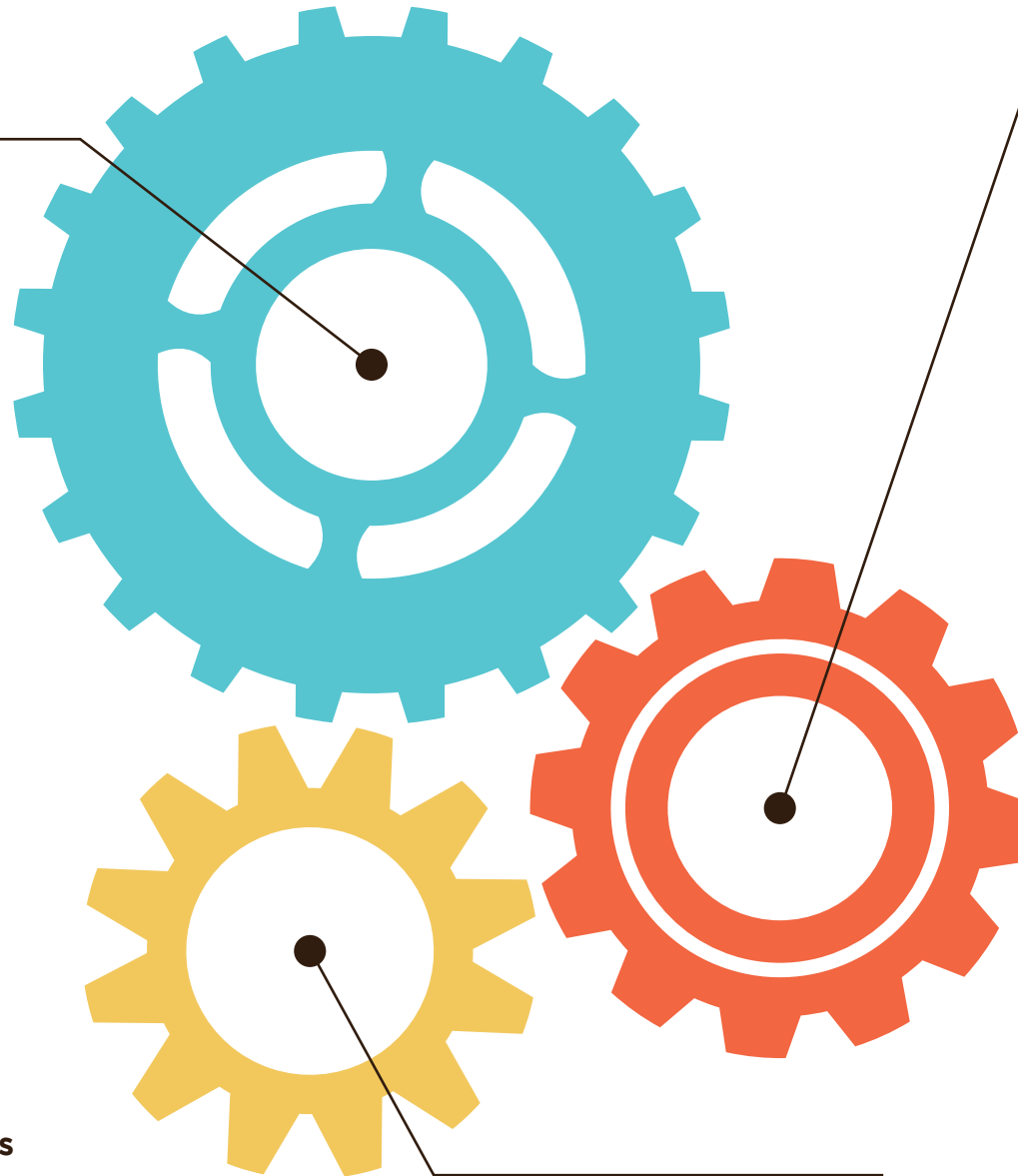
Masiphumelele, Fish Hoek:

- Ukhanyo Primary
- Masiphumelele High
- Simon's Town School

Johannesburg

Lalela Center for Arts and Innovation

- Busy Bee Learning Academy
- JW Saints Technical College
- Metropolitan College
- Yatal College
- Phumelela Private College
- Mahlasedi High
- Destiny Girls College



PROGRAMMATIC PARTNERS

Cape Town

Bertha Foundation:

- Bertha House, Mowbray

Bertha Retreat, Franschhoek

- Pniel Primary
- Nondzame Primary

Philippi Village, Philippi

- Nomlinganiselo Primary
- Dr Nelson R Mandela High
- Siyazakha Primary
- Sunnyside Primary
- Zanemfundo Senior Secondary

Zeitz MOCAA

- Dryden Street Primary
- Ellerton Primary
- Mary Kihn School for Partially Hearing Children
- Prestwich Street Primary
- St. Paul's Primary
- Salt River High
- Harold Cressy High
- Vista High

Johannesburg

- Tomorrow Trust

Zimbabwe

- Zara's Center, Bulawayo

STRATEGIC PARTNERS

- A4 Art Foundation
- One&Only Cape Town
- FNB Johannesburg Art Fair
- Investec Cape Town Art Fair
- V&A Waterfront
- Norval Foundation

Our communities

Strategic partnerships with low-fee or no-fee schools and other organizations that champion youth development allow us to grow our program while putting Lalela at the forefront of educational arts in Southern Africa. These partnerships enhance our ability to advocate the critical contribution that the arts make to academic achievement, socio-economic change and innovation.

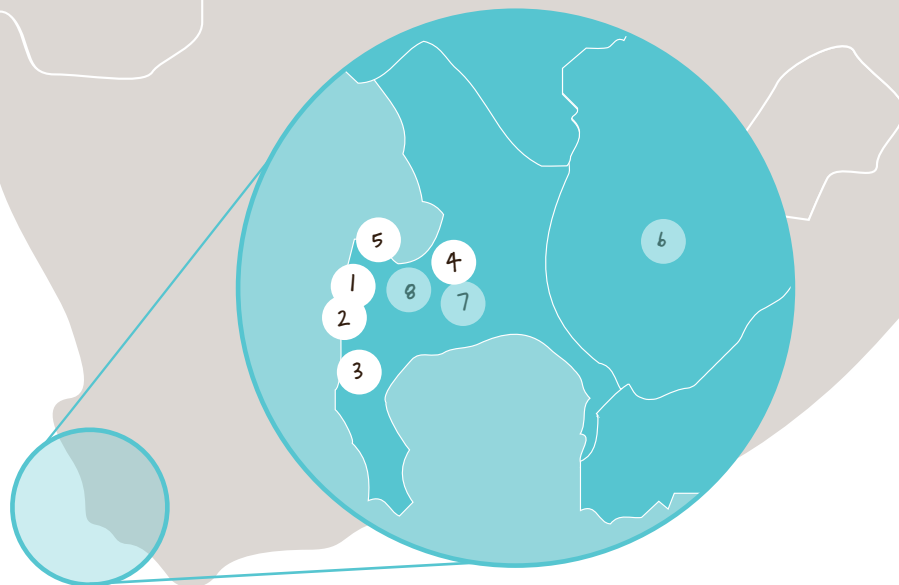


“Lalela has been part of our Sentinel Primary family for years. We have come full circle with

Lalela, by a few of our alumni becoming Lalela mentors and art teachers. Lalela has helped to enrich our motto, “Aim High”, with world-class, high quality lessons to our learners, introducing them to various media and art forms. Their holiday programs are excellent and so are the sandwiches they offer our hungry after-school learners. They have taken our learners to art shows and galleries, expanding their horizons. Our school bears many markings coordinated by Lalela, from our entrance wall to the playground floors. Their teachers offer the love and kindness some children lack at home. We hereby wish to thank you, Lalela, for your investment in our community. Together we can make a difference.”

– Carol Dreyer, Head of Department at Sentinel Primary Hout Bay





Western Cape, South Africa

1 Imizamo Yethu (IY)

Imizamo Yethu (meaning “our efforts” in isiXhosa) in Hout Bay is where the seeds for our program were planted in 2010 with the implementation of informal after-school arts education workshops at IY’s Community Center just after the Soccer World Cup. In 2011, Lalela Project Trust was formally registered as a non-profit organization in South Africa. IY, as it’s commonly known, is an informal settlement, with a population of approximately 40,000 people. The community faces a myriad of challenges such as overcrowding, unemployment and substance abuse.

School partners: *Oranjekloof Moravian Primary, Silikamva High*

“Silikamva High has enjoyed a partnership with the Lalela Project since the school was established in 2013. Lalela has offered their expertise around life skills development through art without reservation, playing an active role in the establishment of a lively and enthralling extramural program at the school.”

– Leigh Schuster, Head of Operations at Silikamva High



2 Hangberg

In 2011, the foundation of our model for an arts education program was developed in our partner schools in both IY and Hangberg, a community located on the steep mountain slope above the Hout Bay harbor. Hangberg in Hout Bay was once a flourishing fishing village, but, due to the steady decline of its economic health, it now suffers from the effects of poverty and issues such as gangsterism and domestic violence.

School partners: *Sentinel Primary, Hout Bay Primary, Hout Bay High*

“Lalela doesn’t only teach learners art skills, it also changes their mindset on how they look at their lives. It gives them an understanding that it does not matter where you come from but rather where you are going. Our curriculum helps them to better handle their circumstances and the abusive situations many of them face at home and in the community.”

– Mark Oppelt, Lalela Senior Facilitator in Hout Bay



3 Masiphumelele

The township of Masiphumelele (meaning “let us succeed” in isiXhosa), which is located between Fish Hoek and Kommetjie on the Cape Peninsula, is another cornerstone of our program where we’ve worked to create change since 2011. Basic amenities are scarce in the community, which, in addition to suffering the effects of extreme poverty, has a high prevalence of HIV and tuberculosis.

School partners: *Ukhanyo Primary, Masiphumelele High*

“In 2022 Lalela helped our educators with impactful training on behavior management, which revived the educators’ spirits and made our classroom a better home for our learners. We are privileged to have Lalela in our school.”

– Mr Michael Tyhali, Principal at Ukhanyo Primary

4 Bonteheuwel

In 2018, we brought our program to Disa Primary in Bonteheuwel, a Cape Flats community ravaged by violence and gangsterism. Marked by poverty and poor infrastructure, the area’s lack of opportunities for the youth further drives the allure of drug use and criminal activity.

School partner: *Disa Primary*

“With Lalela, I am able to provide the youth with the knowledge to make a difference in their lives; to make them see that it does not matter where you come from, but how you handle your situation to get to where you need to be. The most rewarding moment for me is definitely when I can see children in our program overcoming their challenges and wanting more for themselves. They have more self-confidence in everything they do. The art projects allow the learners to create a foundation that will help them build a better future for themselves and their community.”

– Marilyn November, Lalela Facilitator, Bonteheuwel



5 Zeitz MOCAA

In 2018, we launched our exciting Zeitz MOCAA program in partnership with this landmark art museum at the V&A Waterfront. Through this partnership, Lalela is able to bring our after-school program to children from under-resourced, inner-city schools who might otherwise never have access to the creative arts or esteemed institutions such as the Zeitz Museum of Contemporary African Art (MOCAA). Our workshops are held on week-day afternoons at the Zeitz MOCAA Center for Art Education.

School and welfare partners: *Dryden Street Primary, Ellerton Primary, Mary Kihn School for Partially Hearing Children, Prestwich Primary, St Paul’s Primary, Salt River High, Harold Cressey High, Vista High*

“This partnership is a testimony to how far-reaching and inclusive institutions can become when it allows the boundaries of conventional art programs to stretch into community in a deeper and more meaningful way. This is art activism at a grassroots level that will radicalize the landscape and expand the voices of African art discourse in the future.”

– Firdous Hendricks, Lalela Executive Director



6 Bertha Retreat, Cape Winelands

In 2019, Lalela began a partnership with the Bertha Foundation, launching a program at Bertha Retreat in the Cape Winelands. At our dedicated classroom in the Retreat, we provide our life-changing Lalela arts curricula to children from the communities of Pniel and Languedoc. While adjacent to the affluence of the tourism-rich Cape Winelands, these communities are adversely affected by poverty and indigence, with a notably high school drop-out rate.

School partners: *Nondzame Primary, Pniel Primary*

“We use art as a tool to tackle the element of Spatial Justice given the area we operate from. The collaboration between Lalela and the Bertha Retreat has also worked as a change of mind and the work done thus far has helped encourage positive relationships within the Dwarsrivier valley. This has led to significant community building and we hope that it impacts young artists in a positive way.”

- *Lerato Sitole, Bertha Retreat*

7 Philippi Village

During the heart of the pandemic in 2020, Lalela’s life-changing arts curriculum was introduced to children from the Siyangena informal settlement at our dedicated classroom in Philippi Village. This is an integrated Community Development Hub in the township of Philippi, which is considered one of the most neglected areas in the Cape Town Metropole. Our classroom is centrally located alongside a container walk shopping center for small businesses, a business center and various social zones.

School partners: *Nomlinganiselo Primary, Dr Nelson R Mandela High, Siyazakha Primary, Sunnyside Primary, Zanemfundo Senior Secondary School*

“Lalela, for me, is a powerful tool that is capable of making a significant difference in the communities of our continent, particularly in communities that are challenged by the psychosocial challenges caused by economic and systematic struggle. The learners I work with are exposed to traumatic circumstances and environments, and the Lalela model creates a pragmatic and extremely supportive safe space for our learners to thrive.”

- *Chuma Nozewu, Lalela Coordinator and Facilitator at Philippi Village*

Gauteng, South Africa

9 Lalela Center of Arts and Innovation

Lalela partners with several schools in Johannesburg's inner city, providing a safe space for learners of multiple ethnicities at our center in the Maboneng district. The area is home to approximately two million multilingual individuals from South Africa and the greater African continent. Challenges are ever-present as the area suffers from severe poverty and issues such as unemployment, crime, xenophobia, and drug and alcohol abuse. Many of our students are undocumented and therefore face additional challenges such as not being eligible for further study or job opportunities.

Lalela's partnership with the Tomorrow Trust has brought our arts education program to learners from Soweto and Diepsloot through workshops on Saturday mornings.

School partners: *Busy Bee Academy, JW All Saints College, Metropolitan College, Yatal College, Phumelela College, Mahlasedi, Destiny Girls Colleges, Tomorrow Trust*

"Lalela has been a great partner to Phumelela since our inception two years ago. We have grown by 120% this year and Lalela played a crucial role in us achieving that feat with the attraction the program has to parents and children alike. We will have our first class of Matrics in 2024 and we have a healthy grade 11 group who all attend Lalela. We are seeing the difference in terms of behavior, expression and leadership, all of which I presume is a result of the Lalela curriculum as they always look forward to going to their sessions."

- Mr. Innocent Mhlanga, Phumelela College
Johannesburg

8 Bertha House, Mowbray

Our latest project with Bertha Foundation was launched this year at Bertha House in Mowbray. Bertha House provides resourced space to activists, storytellers, educators, artists and anyone committed to creating more just societies. Bertha House's goals to bring about social and economic justice and human rights for all are perfectly aligned to Lalela's Theory of Change. The space creates the perfect environment to host Lalela workshops for high school learners from the neighboring school, Thandokhulu High, to spark creative thinking and promote active citizenry through the arts.

School partners: *Thandokhulu High School*

"Lalela has allowed us to have more stimulating offerings. They host afternoon art sessions twice-weekly, and what began as a single-grade program now flourishes with four grades, as the Lalela Facilitator, Rowan inspires and guides them on a weekly journey of creativity and knowledge."

- Nobesuthu Beya, Bertha House





Lihle Mjubajuba (17) is in grade 12 and lives in the under-resourced area of Masiphumelele. It's her dream to become a professional person who'll be able to sustain herself and family, while also uplifting and bringing change to her community.

When my name is mentioned, I want people to think of me as the woman who stands for youth development and empowerment, and that she never gives up without trying to help. Where there is a will, there is a way.

Growing up in Masiphumelele, a township near Cape Town, has been both challenging and educational for me. I've been here since I was a child, and I've witnessed significant changes in my community. Unfortunately, I've also seen the rise of problems like drug abuse, high crime rates, and a lack of resources in our schools. It's a tough environment, especially for a girl, as we are not immune to the pressures of joining gangs or facing violence.

I chose a different path, one that abstains from the negative aspects of the community, but it wasn't always easy. I faced judgement from my peers for not conforming to certain behaviors, but I believe that my decisions will lead to a better future. I've watched some of the people I grew up with turn to drugs and gangs, and it's heartbreaking to see lives lost to violence.

Joining Lalela was a turning point for me. It gave me the

confidence to ignite skills that were dormant within me. I learned to express myself professionally and developed an entrepreneurial spirit. Most importantly, I found a family within Lalela. It became a safe haven where I felt protected, encouraged, appreciated, and loved.

As I navigate my senior year in grade 12, I have the support of my Lalela family. They cheer me on through the stress of this final year of school. Lalela is my escape from the community's challenges, but it also equips me with the confidence and solutions to face them.

When I think about my dreams, I don't just focus on my career. I dream of inspiring others in a positive direction, encouraging those who may doubt their abilities to rise and take action. My success will be measured by the positive changes I make in people's lives. I believe in unity and the power to transform the world, one person at a time.

So, my message to the youth of South Africa is simple: aspire to inspire before you expire. No dream is too small if you believe in yourself and take action to pursue that dream.



“Joining Lalela was a turning point for me. It gave me the confidence to ignite skills that were dormant within me.”



Zimbabwe

10 Zara's Center, Bulawayo

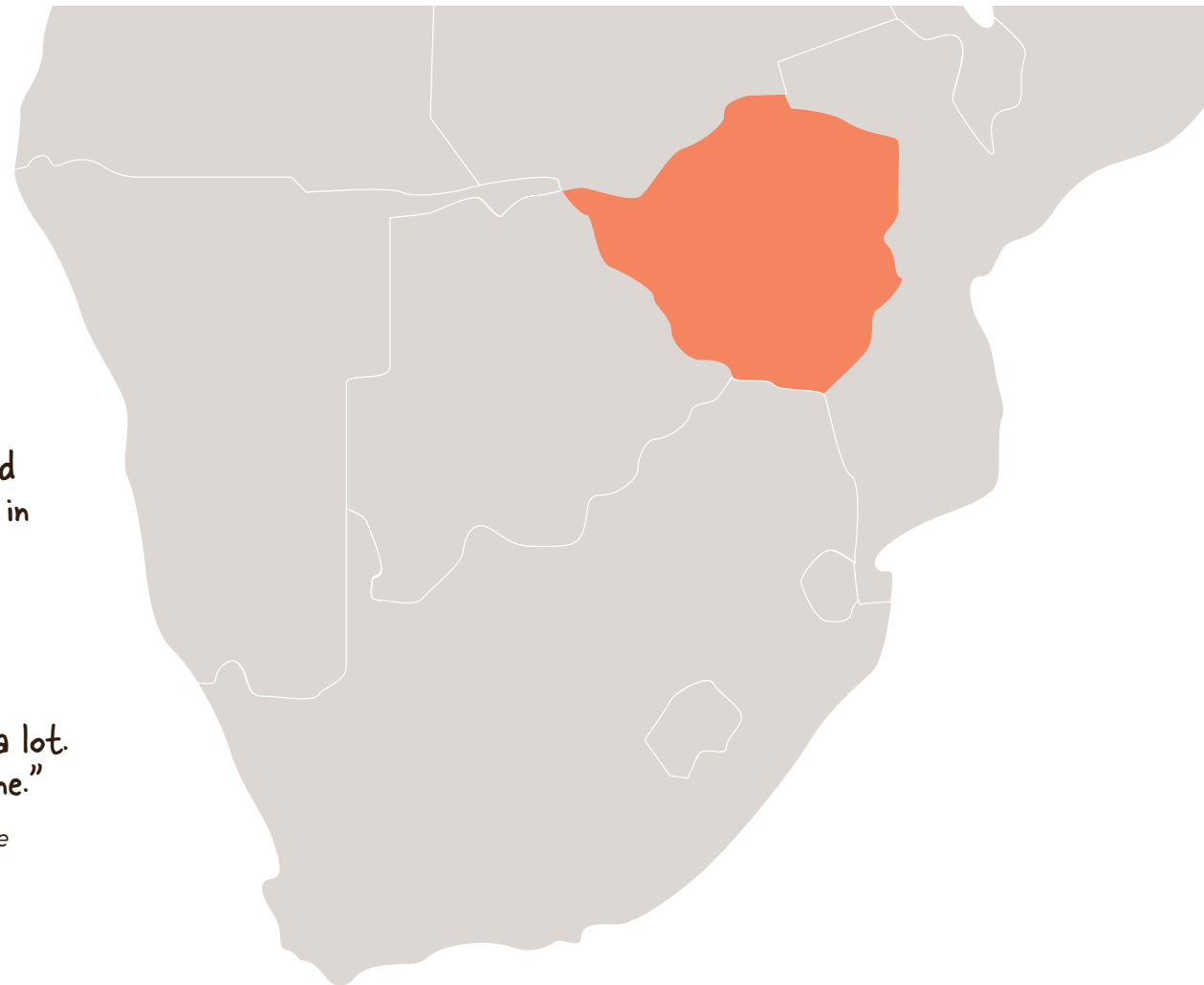
In 2017 Lalela partnered with Zara's Center in Bulawayo, Zimbabwe, an after-school safe-haven for orphaned and vulnerable children. After six years of bringing arts education to the center, we have been privileged to witness our learners grow and develop from young primary school children into confident and creative youth in high school.

"Lalela has given my learners a sense of belonging and hope for the future, and they are seeing the world in new ways. We are raising the leaders of tomorrow."

- Rebecca Gopito, Lalela Facilitator at Zara's Center, Zimbabwe

"Lalela has done a lot in my life and it's still doing a lot. It boosts my creativity and teaches me self-discipline."

- Emmanuel Manda, 15, Lalela Learner at Zara's Center, Zimbabwe



Special Programs

Female Empowerment

In 2022, 55 grade 8 girls from Hout Bay and Silikamva High enrolled in the Lalela Female Empowerment Program. Equipping young women to imagine a better future for themselves is one of the main goals of our Female Empowerment program for high school students. It aims to encourage female learners to remain in school, develop the confidence to excel in their academic studies and build the courage to dream beyond what is expected of them.

In 2022 we conducted an M&E report for the Female Empowerment program. The evaluation found that a number of positive outcomes have been reported and can be seen through positive changes in learner responses to a standardized survey from 2021 to 2022, and through a focus group. These outcomes relate to how learners consider other people's feelings, learners thinking about having a meaningful career in the future, learners knowing how their actions impact other people, learners knowing how to get better at things that are hard for them to do at school, and learners feeling, "I am great just the way I am."

These outcomes speak directly to some of Lalela's outcomes from its Theory of Change, along with the more general aims of the Female Empowerment program around self-respect, self-esteem, and learners building the courage to dream beyond what is expected of them, showing that the program is reaching many of its intended outcomes and adding great value to the learners' lives.



"I feel very confident now. Before joining Female Empowerment, I felt down and didn't appreciate myself. So, Lalela helped change that."

- Lalela Female Empowerment Learner at Silikamva High



Leadership

Lalela's Leadership program seeks to transform students into role models and strong leaders who can truly become trailblazers of change. In 2022 we launched two Leadership programs: for our grade 10-11 learners and our grade 12s who missed the opportunity to participate in the program due the COVID-19 pandemic. During the June holidays, they worked as volunteers at our Primary School programs. This was an opportunity to be recognized as role models by the young children in their community.

What this year's Leadership group brought to light is the way in which Lalela develops our youth from the ground up. With a full and intensive program, this year's cohort worked harder than any other and we are incredibly proud of how they rose to every challenge - with resilience and a positive attitude, supporting each other every step of the way. The Lalela Leadership program pushes our youth that much further to make sure they are able to realize their full potential before stepping out into the big world.

"Being a Lalela leader doesn't just mean you are leading a group. It is about how you influence that group, how you're going to make a path for them to follow by showing them what a strong leader you are, and how to treat people with respect and kindness."

- Ashwin Swart, Lalela Leader



2022 Impact
Year in REVIEW

In 2022, despite ongoing challenges following the pandemic, we returned to full-capacity classrooms. We remain committed not only to education but to the holistic well-being of the communities we serve. Thank you to our supporters for helping us provide tangible support and aid, and congratulations to our successful matric learners.

82
 Classes per week.

89%
 of Lalela matrics received a Bachelors or Diploma Pass, giving them entry to academic tertiary institutions.

57,000+
 learners have experienced Lalela's life-changing arts curriculum to date.

33
 low-fee, no-fee and other schools in partnership with Lalela.

90%
 Pass rate for Matric (Grade 12) final exams, for Lalela learners in Cape Town.

100%
 Pass rate for Matric (Grade 12) final exams, for Lalela learners in Gauteng.



Grade 12 Exam Results

We couldn't be prouder of the Lalela learners who passed their final school exams with flying colors despite the tremendous challenges faced during their matric year.

For our Lalela family, the news that 90% of matrics signed up to our after-school programs in Cape Town and 100% of matrics attending Lalela in Johannesburg not only passed their final year but also achieved outstanding results were truly reasons for us to rejoice.

This against an 80.1% national pass rate. However, what is notable is the high dropout rate for the 2022 matric year, which was a startling 31.8%. With the number of high school dropouts taken into account, the national pass rate would stand at 54.6%. All of this shines a light on the remarkable achievements of

our Lalela learners, with 89% achieving a Bachelors of Diploma pass, allowing them, against all odds, to enter into academic tertiary education.

Arts education encourages learners to stay in school while helping them to focus on and improve their academics. The art projects our learners engage with at Lalela are designed specifically to encourage whole-brain thinking and develop creative and critical thinking so that they can approach challenges or problems in a more creative way. We've seen their problem-solving skills become markedly improved.

Through the Lalela curricula learners also gain a sense of mastery, which lifts their confidence and self-belief and **encourages grit and perseverance**, all of which is transferable to their school life.



LEFT: Pellocia is a budding poet and has been part of Lalela since grade 3. She received a Bachelor's Pass.

BOTTOM LEFT: Willoughby received a Bachelor pass with a distinction in Life Orientation, History and English. As head boy at the school and a member of the Lalela leadership program, he will go on to make himself and his community extremely proud at university. He has been accepted to study Dentistry at UWC.



OPPOSITE: Joan, Leslie, Aisha and Arnique have been with Lalela since grade 1 and have all participated in the Lalela Leadership program. Joan was Hout Bay High's 2022 Valedictorian.



10,140
Food parcels and vouchers distributed to Lalela learners and their families

Food Relief

With a return to big, busy classes at the schools with which Lalela partners in under-resourced communities, there was a perception that life for the most part had returned to normal. However, this couldn't be further from the truth. The reality was that families in these communities continued to be economically affected by COVID-19.

Through the generosity of the Kirsh Foundation, Lalela was able to continue to provide a tangible level of care in the communities we serve in 2022 by distributing monthly vouchers for groceries and essentials or food parcels. The COVID-19 Emergency Food Aid Fund gave us that special opportunity to face the massive challenge of hunger head on, making a proper impact on the lives of those suffering real economic distress.



BY THE END OF 2022:
854
teachers
from **438** schools had
been trained in four
provinces, impacting over
86,000 learners.

Lalela's Trauma Curriculum

Lalela's 'Guide for Educators Working with Learners Affected by Trauma' was developed in 2020 in response to the effects of COVID-19 and subsequent lockdowns that compounded already challenging circumstances for vulnerable learners, many of whom are deeply affected by trauma. Lalela regularly works with learners affected by constant exposure to gang violence, domestic violence, drug abuse, community unrest, poverty, HIV and displacement. Through our educational arts programs we developed creative methods of helping learners affected by trauma to ground themselves, self-regulate and debrief after a traumatic event. These skills help them focus on learning and creating in a safe and healthy environment.

The carefully formulated arts-based activities and exercises in this guide are highly effective tools that educators can easily incorporate into lessons as a way to ground learners and help them to focus despite their emotional circumstances. In 2021 the curriculum received a three-year endorsement by the South African Council for Educators (SACE) and has since been rolled out to educators as both virtual and in person trainings in partnership with the **Western Cape Education Department (WCED)**, the **Mpumalanga Department of Education**, the **Gauteng Department of Education** and the teacher union **NAPTOSA** in KwaZulu-Natal. The training rollout is due to continue over the next two years, covering all nine of South African provinces.

“Learners affected by trauma now appear calmer in my class after implementing exercises from the resource guide. A learner who was often absent from class because of a traumatic event is now attending class more regularly and seems more relaxed since I have been using Lalela's activities at school.”

- Taryn Jackson, Western Cape educator

“Thank you for letting me be a part of this and for broadening my horizons to this type of thinking, for helping to shift my thinking into the possibility of allowing the learners to be seen or heard for who they are. Learners appear to be self-regulating their emotions better than before, are more expressive, and appear to have developed more empathy as a result of the program.”

- Ruby Klazen, Western Cape educator



Impact Stories

Atnicha (22) joined Lalela in grade 8 when she was a learner at Hout Bay High School. She expresses gratitude for the experience, since it played a significant role in enhancing her self-awareness and social skills. Today, Atnicha is employed by the SA Army.

It was not always nice growing up in Hout Bay, but I had to get through it because I knew I didn't want to be like the people around me. I attended Lalela from 2015 to 2019 and I was fascinated by the interesting things that the programme taught me which I really enjoyed, because I was always willing to learn new things. I learned so much by being part of Lalela. I learned how to be creative and how to express my feelings

through art and music. I gained so much confidence and I now believe in myself.

Lalela means a lot to me – that's where I spent most of my time after school and it kept me from the streets and doing the wrong things. For all the young people out there, I would like to motivate them to work hard and have the confidence to raise the bar when it comes to achieving their ambitions.



“I learned so much by being part of Lalela. I learned how to be creative and how to express my feelings through art and music. I gained so much confidence and I now believe in myself.”





*LEFT: **The Abstract Galaxies curriculum** explores abstract painting by layering elements to create successful compositions; experimenting with outer space as inspiration; and embracing freedom of expression through mark-making, shape and color.*

2022 CURRICULUM

An Art Odyssey

In 2022, Lalela encouraged learners to explore new horizons and discover new ways of being, doing and achieving through art and creative expression after two years of innovation within the constraints of serious challenges including isolation.

Our theme for the year, “An Art Odyssey”, guided Lalela artists on a journey of creative expression, skills development, art activism in response to injustice, as well as healing and self-regulation.

In Term One, it was *Blast Off* with the **Abstract Galaxies curriculum**, recreating Lalela classrooms into creative environments, fostering belonging, freedom of expression, and positive risk-taking. Learners engaged in collaborative projects across diverse art mediums, built foundational skills and cultivated teamwork.

*RIGHT: In the **Beauty of Life curriculum**, learners engage in creative meditation to appreciate the beauty in everyday life, shifting away from conventional subjects like landscapes and nature. Artists embark on explorative walks, seeking inspiration in ordinary moments for their artwork.*

*MIDDLE RIGHT: The **Trash to Treasure curriculum** encourages youth to envision a brighter future by addressing environmental concerns and our human impact on the world. We partnered with the Sentinel Ocean Alliance, who facilitated beach clean-ups and talks with our various communities about conserving our environment.*

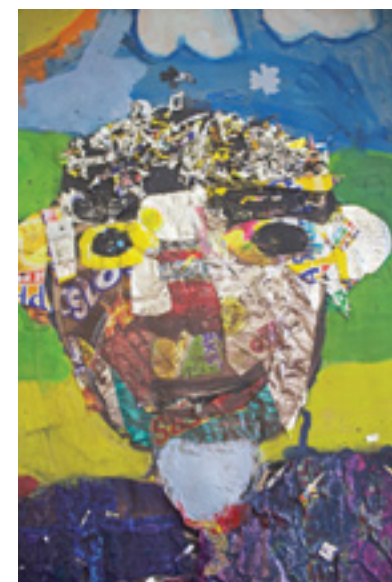
*BOTTOM RIGHT: In our **Safety Net curriculum**, artists gain awareness of their community's safe and unsafe areas, using this knowledge to craft a safety network which includes creating a map of secure routes, including physical locations like schools, clinics or police stations, as well as that of trusted individuals such as grandparents.*

In Term Two, the **Trash to Treasure curriculum** was a *Deeper Journey* into critical consciousness, raising awareness of environmental issues, strengthening personal values and using art as a tool for active citizenship. It included mastering technical art skills and creativity to help primary school learners recover missed academic milestones due to the pandemic.

In Term Three, our **Safety Net curriculum** motivated Lalela artists to create an intentional *Art Response* to youth-related issues. Across all age groups and leading up to Women's Day and Heritage Day, various mediums like podcasting, puppeteering, public installations and photography were utilized to address challenges, spark new conversations and imagination.

In Term Four, the **Beauty of Life curriculum** transformed Lalela classrooms into spaces for *Rest and Rejuvenation* as learners coped with end-of-year stress. Our curriculum emphasized healing, reflection and community care, and equipped learners with creative tools to manage their mental health. Older learners developed curatorial and presentation skills to uplift the community through the exhibitions of their year-long creations.

The Lalela facilitators were brimming with ideas, passion and motivation to enrich every learner's 2022 Art Odyssey with creative adventures, invaluable experiences and learning.





Investec Cape Town Art Fair

Following a two-year hiatus, Lalela and Lalela Scarf were thrilled to return to the Investec Cape Town Art Fair. Amidst a curated collection of exquisite Lalela scarves available for purchase, we proudly showcased a captivating exhibition of Lalela artworks. Notably, our Lalela alumni spearheaded the delightful Kids-4-Kids art tours for school groups, marking a standout moment at ICTAF.

Stanford Global Studies Internship Program

With in-person internships resuming, Lalela had the privilege of hosting two students, Asukulu Songolo and Sarah Griffin, as part of the Stanford Global Studies summer program in Cape Town. Their meaningful connections with our learners and their contributions to our June Holiday programs and data collection for monitoring and evaluation processes were invaluable.

Mandela Day

Lalela's Maboneng program engaged in a transformative mural painting and park beautification activation at Gerald Fitzpatrick Home for Mandela Day. Partnering with 40 high school learners from two local schools, the project was a testament to the power of collaboration and community impact.

Youth Day

Thanks to the generous support of the V&A Waterfront, Lalela hosted a dynamic Youth Day activity on June 16. Our Leadership learners led a Heart Maps workshop, introducing the creative process to a new group of Zeitz MOCAA youth. Additionally, our team facilitated an interactive public engagement canvas, reflecting our collective hopes and wishes for the youth of South Africa.

FNB Art Fair

At FNB Art Joburg, our Maboneng Art Center once again ran the Kids for Kids tours. Lalela's grade 9-10 student leaders conducted guided art tours for 170 learners from six different schools, making the Art Fair accessible to youth who might not otherwise have experienced the art world in such an inspiring manner.

With Love, From Sag Harbor to Hout Bay

An esteemed collaboration with the Sag Harbor Whaling Museum resulted in the exhibition 'With Love, From Hout Bay to Sag Harbor.' Our Lalela learners depicted scenes from Hout Bay and Sag Harbor, fostering a sense of wonder about the ocean, shared global community, and interconnectedness between two seemingly distant towns.



Women's Day

On National Women's Day, Lalela had the honour of hosting a group of inspiring female figures for a Heart Maps workshop. Through this empowering process, our girls learned to amplify their voices and recognize the significance of expressing their ideas, stories and opinions.

Heritage Day

Our Bonteheuwel program, in partnership with Disa Primary School, hosted an engaging Heritage Day event where learners celebrated South Africa's diversity through traditional dress and artwork.

Johnathan Butler visits Lalela

A highlight of the year was hosting Johnathan Butler and his guests from the USA at our Hout Bay Program. Three of our Alumni, Apendule Sixhe, Melody Legwale and Yolanda Mswaka, joined Johnathan for a meaningful lunch, sharing the transformative impact Lalela has had on their careers and tertiary education. The event concluded with a mural painting at Sentinel Primary School and a soulful performance by Johnathan for the Hangberg community.

Gallery Visits

The easing of COVID-19 restrictions allowed our learners to once again experience the world through art with outings and workshops at the Norval Foundation, A4 Art Foundation and the Goodman Gallery.

Joy From Africa

In partnership with the V&A Waterfront's Joy From Africa Project, our Zeitz MOCAA learners adorned the Christmas tree with self-portraits. The Christmas tree is the V&A's most photographed feature in their calendar, and the learners were elated and incredibly proud to see their artwork showcased for so many people from all around the world to see.

Community Exhibitions

We concluded the year with in-person community exhibitions and prize-givings across all our communities. These celebrations were a heartfelt tribute to our learners' accomplishments, serving as a vital recruitment tool for a promising year ahead.



Holiday Programs

Lalela's holiday programs are fundamental to our mission of sparking creative thinking and awakening the entrepreneurial spirit in our learners, while providing safe spaces during the long school breaks. After two years of hosting virtual holiday programs due to COVID-19, it was exhilarating to finally welcome our learners back into physical holiday workshops.

March Holiday Program

Across all Lalela's programs during the March school holidays, our young artists had a joyful and educational time with their friends and classmates. Our main holiday program curriculum took its cue from Human Rights Day, which was marked earlier in the month. The learners worked in groups with their friends to make colorful lanterns and posters to shine a light on children's rights – a creative as well as empowering exercise for Lalela's young artists. The art-making activities led up to exhibitions and celebratory processions to show off their beautiful creations as proud, active citizens.

June Holiday Program

As our partner schools transitioned back to full-sized classrooms, an array of post-lockdown psycho-social challenges reared its head. To address some of the struggles our learners were facing at school, our June Holiday Program focused on teens and children's mental health. Our primary school learners engaged in self-regulating and grounding art activities, while our older groups explored personal well-being and the causes and effects of bullying through healthy debate, photography, poetry, printmaking and sculpture.

December Holiday Program

In the spirit of giving back, our December Holiday Program focussed on a number of school beautification projects that decorated our schools and creative spaces with educational games and murals. Our young artists also created gifts of gratitude for their loved ones.





Nqaba Mhlana (20) was only 8 years old and in grade 2 when he became a part of the Lalela program in Masiphumelele. Currently, he is enrolled at the University of Fort Hare, pursuing a Bachelor of Education. Inspired by what he learned during his time with Lalela, his aspiration is to lead a life that inspires others.

Growing up in Masiphumelele wasn't too bad for me. Some might think living in Masi is tough, like you're suffocating. But for me, it wasn't that way. I had organizations like the Lalela Project. These places were like therapy for me. They helped heal my wounds, and since I love art, it felt like a safe haven. I didn't really notice challenges until my mother passed away when I was in grade 7. Suddenly, home didn't feel like home anymore, because something had changed. But I'm glad I didn't let it push me in a bad direction. Instead, I held onto what I loved and believed in.

I really enjoyed drawing. We had a kind Lalela facilitator who was humble and like a kind father figure to us.

Being part of Lalela taught me important things like discipline, love, and respect. I also learned about being inclusive and making everyone feel welcome. The facilitators made sure we had a space where everyone belonged.

Lalela means home, love and respect to me. My dream is to achieve something big that carries my name and inspires others.

I want to encourage young people in South Africa to join programs like Lalela and to grow with them. Lalela is like therapy because it shaped who I am today. I'm proud to be Nqaba, the person that my mother raised.



“Lalela means home, love and respect to me. My dream is to achieve something big that carries my name and inspires others.”



3,808

Lalela Scarf products
sold in 2022

59

Lalela Scarf
retail partners
internationally

100%

of the profits from each sale go
back to Lalela, helping learners
find their voice and overcome
the narrative of poverty through
the transformative power of arts
education, while also allowing
their artwork to reach a global
audience.

Lalela Scarf



Lalela Scarf is integral to the organization's sustainability. Products range from luxurious scarves to the cosiest of pyjamas, printed with patterns which are all original works of art created by students in our programs. In the United States, Lalela Scarf has expanded to include The Marketplace, which is a curated collection of South African made goods, ranging from ceramics to feather key rings. All products are sold directly to the public or to high-end retail outlets, locally and internationally, and are available to purchase on www.lalelascarf.org / www.lalelascarf.co.za

Our Financials

As at December 31, 2022 and 2021

Statement of Financial Position

Figures in USD	2022	2021
Assets		
Cash	\$ 426,097	393,127
Unconditional promises to give	5,000	65,835
Accounts receivable	81,014	63,160
Prepaid expenses and other assets	44,488	30,101
Property and equipment, at cost, net of accumulated depreciation and amortization	-	4,925
Total Assets	\$ 556,599	\$ 557,148
Liabilities and Net Assets		
Liabilities		
Accounts payable and accrued expenses	\$ 112,517	88,265
Loan payable - Paycheck Protection Program	-	41,607
Total Liabilities	112,517	129,872
Net Assets		
Without donor restrictions	444,082	427,276
Total Liabilities and Net Assets	\$ 556,599	\$ 557,148

Statement of Activities

Figures in USD	2022	2021
Changes in Net Assets Without Donor Restrictions		
Revenue and Public Support		
Contributions and grants		
Foundations	\$ 30,000	-
Individuals	318,472	433,320
Corporations	138,477	23,075
Special events	438,757	378,349
Less: Direct event expenses	(39,715)	-
Loan forgiveness - Paycheck Protection Program	41,607	29,835
Merchandise sales	116,354	103,878
Interest income	20	20
Total Revenue and Public Support	1,043,972	968,477
Expenses		
Program Services	754,274	811,461
Supporting Services		
Management and general	148,760	142,166
Fundraising	124,132	73,079
Total Supporting Services	272,892	215,245
Total Expenses	1,027,166	1,026,706
Decrease in net assets	16,806	(58,229)
Net assets, beginning of year	427,276	485,505
Net Assets, End of Year	\$ 444,082	\$ 427,276



Our Sustainable Future

Lalela's future impact relies on sustainable and diversified funding, as well as strategic alliances with committed programmatic partners. We aim to derive more investments from South Africa through interest in education and transformation.

Through our initiative with Lalela Scarf, 100% of the profits from each sale go back to Lalela, contributing to our ability to sustain our programs long-term.

Our focus is the development of corporate sponsorships, a private donor and foundation platform, and campaigns across our digital platforms aimed at funding Lalela classrooms.

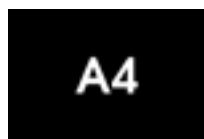
The average size of a physical Lalela classroom is 24 learners, served by a Lalela facilitator and co-facilitator who have undergone training in our proprietary curriculum and methodology. Through our workshops, learners are equipped with unique experiential learning and support, which extends beyond the classroom and into the community.

If we are able to fulfill our core funding appeal along with core funding support, we can sustain our programmatic future.

Visit our website, www.lalela.org



Strategic Partners



FNB JoburgArtFair

Investec



One&Only
Cape Town



Sarpe
Schools Festival



STEYN CAPITAL



ZEITZ MOCAA



Our Boards and Teams in 2022

US Board

- Chairperson:**
Andrea Kerzner
- Secretary:**
Terry Torok
- Treasurer:**
Norman Cohen

- Michael Beneville
- Jonathan Butler
- Colin Finkelstein
- Wendy Fisher
- Lisa Kaye
- Vanessa Kerzner
- Jesse Robert Lovejoy
- Busie Matsiko
- Shaun Osher
- Sandy Tabatznik
- Michele Wiltshire
- Ronald Wohlman

SA Board

- Chairperson:**
Andrea Kerzner
- Secretary:**
Caro Macdonald
- Treasurer:**
Suzanne Annenberg

- Abigail Bisogno
- Oliver Nurock
- Sandy Tabatznik
- Marco Van Embden
- Elana Brundyn

Advisory Board

- Chairperson:**
Ronald Wohlman

- Emily Beare
- Greg Calejo
- Colin Cowie
- David Friedman
- Mark Landis
- Edward Nahem
- Renee Rolleri
- Nina Runsdorf
- Mark Rutstein
- Kweku Mandela
- Lara Stein
- Carmen Zita

Trustees

- Andrea Kerzner
- Abigail Bisogno
- Marco Van Embden



New York Head Office

Chief Executive Officer & Co-founder:

Andrea Kerzner

Chief Creative Officer & Co-founder:

Sandy Tabatznik

Program & Communications

Administrator: Melissa Jester

Cape Town Head Office

Executive Director:

Leigh Robertson/Firdous Hendricks

Senior Program Manager:

Firdous Hendricks

Partner Programs and M&E Manager:

Sean MacGinty

Office Support:

Maxine Christians, Zimasile Sibotoboto

Interns:

Ryan Lott, Yolanda Mswaka

Cape Town facilitators

Bertha Retreat Facilitators:

Chanté Marajh, Meliny Swartz

Bertha Retreat Co-facilitator: Yoliswa Bambiso

Bonteheuwel Facilitator: Marilyn November

Hout Bay Program Coordinator and Senior Foundation Phase Facilitator: Tandile Makhabeni

Hout Bay Senior Facilitator: Mark Oppelt

Hout Bay and Bertha House Leadership Coordinator and Senior Facilitator: Rowan Roman

Hout Bay and Female Empowerment Facilitator: Terri Dennis

Hout Bay Facilitator: Thandi Gaji

Masiphumelele Coordinator and Senior Facilitator: Nwabisa Ndongeni

Masiphumelele Co-facilitator: Nosiphiwo Nojavu

Philippi Village Coordinator and Senior Facilitator: Chuma Nozewu

Zeitz MOCAA Program Manager and Senior Facilitator: Amy Cornfield

Zeitz MOCAA Facilitator: Siyolisi Bani

Maboneng Precinct Lalela Center for Arts and Innovation (Gauteng, SA)

Program Manager: Vika Mjoka

Facilitator: Thandiwe Sibanyoni

Facilitator: Portia Qhemekoane

Intern: Vuyisile Ngwenya

Tomorrow Trust

Vika Mjoka

Zara's Center (Zimbabwe)

Facilitator: Rebecca Gopito



Lalela Office, South Africa

+27 21 790 1108

firdous@lalela.org

36 Albert Road, Hout Bay, Cape Town 7806

PBO: 93 0036496

NPO: 090608

Lalela Office, New York

+1 (215) 359-5214

melissa@lalela.org

PO Box 20395, New York, NY 10023